

(1) Gain setting

H : High frequency
L : Low frequency

*The number shows the present set value of gain.

(2) Range mode

R:M : Manual
R:A : Auto range
R:AS : Auto shift

(3) Power Voltage

(4) Alarm Set Status

← Arrival alarm
← XTE alarm

← Water temp alarm
← Speed alarm

(5) Status of [F1]/[F2] key assignment

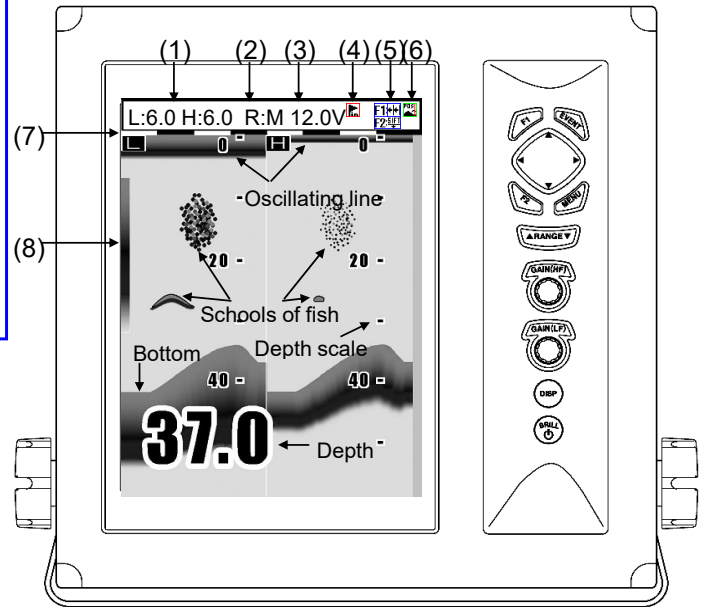
← Image speed
← Interference rejection
← Color rejection
← Noise reduction
← Shift
← Zoom range
← Zoom start
← A scope
← White line
← Background color

(6) Status of [EVENT] key assignment

← Store position
← Store image
← Fishing hot spot

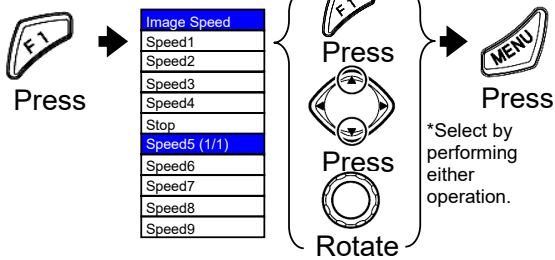
(7) Time mark

(8) Rainbow pattern



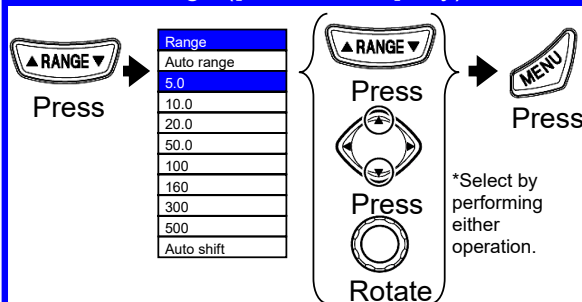
Select the setting of preset function ([F1]key / [F2]key)

The function differs depending on the [F1]/[F2] key setting.
In case of [Image speed]:

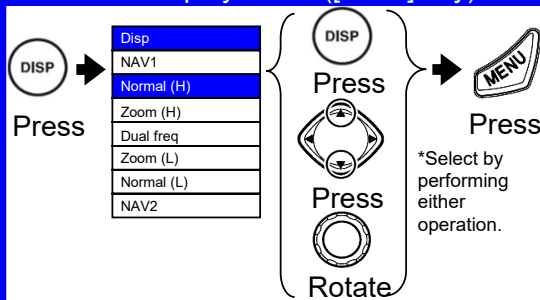


*By continuously pressing the [F1]/[F2] key, a function assigned to each key can be selected.

Select the range ([▲ RANGE ▼] key)



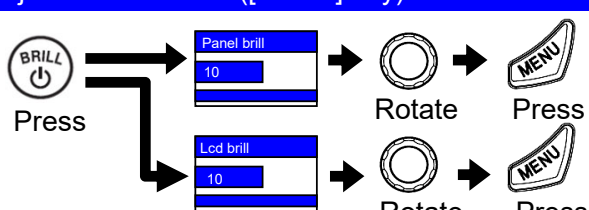
Select the display menu ([DISP] key)



Power on/Power off ([BRILL] key)

Power on. Press the BRILL key.
Power off. Keep pressing for more than 3 seconds.

Adjust the brilliance ([BRILL] key)



*Every time when pressing the [Brill] key, the item is alternately displayed.

Preset the destination / Preset the image ([EVENT] key)

Depending on the [EVENT key set], the function differs.

In case of [Store pos]:

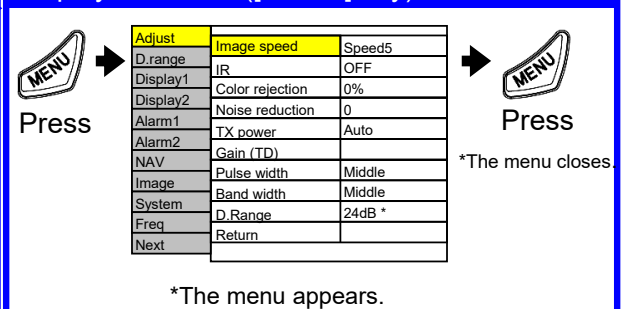
Press the EVENT key → Store the destination.

In case of [Store image]:

Press the EVENT key → Store the image of echo sounder.

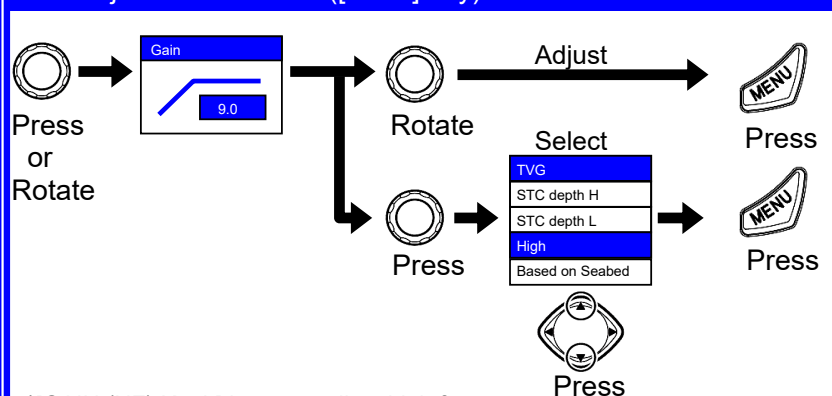
*The navigation data such as GPS is necessary.

Display the menu ([MENU] key)



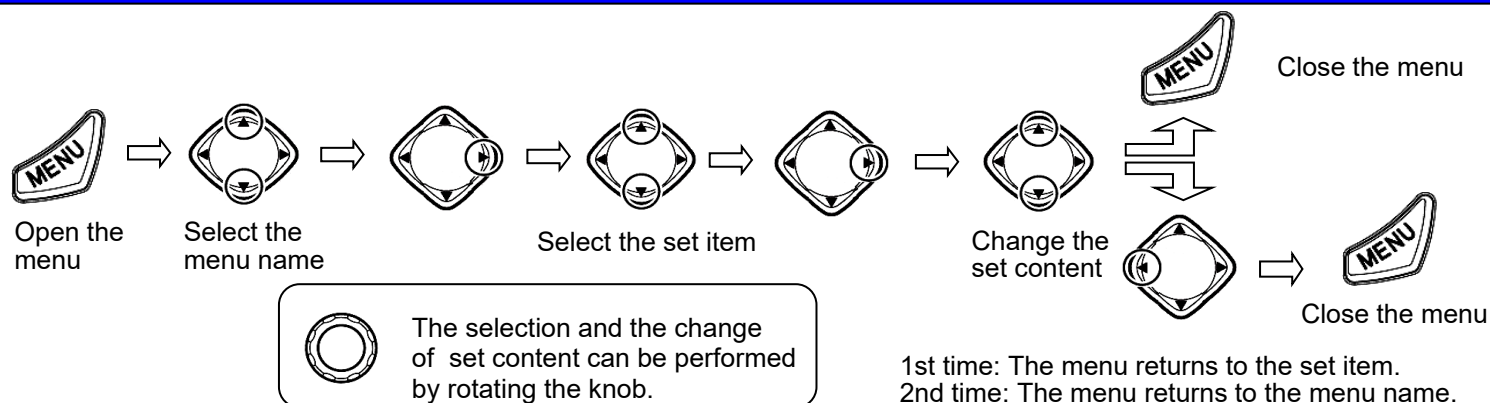
*The menu appears.

Gain adjust / TVG select ([Knob] key)



*[GAIN (HF) Knob] key can adjust high frequency.
*[GAIN (LF) Knob] key can adjust low frequency.

● How to operate the menu



● Function of Adjust Set Menu

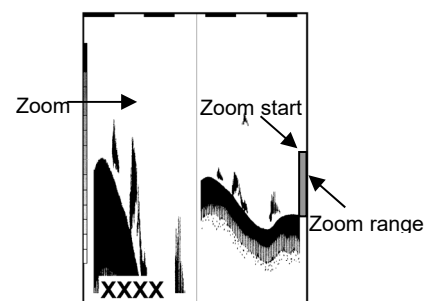
Adjust	Image speed	Speed5 (1)
D.range	IR	Strong (2)
Display1	Color rejection	0% (3)
Display2	Noise reduction	0 (4)
Alarm1	TX power	Auto (5)
Alarm2	Gain (TD)	(6)
NAV	Pulse width	Middle
Image	Band width	Middle
System	D.Range	24dB *
Freq	Return	
Next		

- (1) Change the image speed.
The image speed becomes slow in order of [Speed1]=[Speed2]=>...=>[Speed9].
When [stop] is selected, the image stops.
- (2) It rejects the interference with other echo sounder.
When [Strong] is selected, the effect of rejection is strong.
- (3) It rejects the weak noise appeared on the display.
The greater the number is, the stronger the rejection becomes.
- (4) It rejects the speck-like noise appeared on the entire image.
The greater the number is, the stronger the rejection becomes.
- (5) It sets the TX power.
- (6) The reduction in sensitivity due to signal attenuation in Gain (TD) use and so on can be corrected.
You can make numerical value bigger at the time of lack of sensitivity.

● Function of display range set menu

Adjust	Shift step	1m (1)
D.range	Zoom type	BTM. (2)
Display1	Zoom range	10.0m (3)
Display2	Zoom start	0m (4)
Alarm1	Disp width	Center (5)
Alarm2	Range preset	(6)
NAV	Return	
Image		
System		
Freq		
Next		

- (1) It sets the quantity of movement of shift.
- (2) It selects the kind of the zoom type.
- (3) It sets the range of image selected in (2).
- (4) It sets the zoom starting position of image set in (2).
- (5) It selects the disp width.
- (6) It presets the range.



● Preset of Range

Registration of the range can be easily changed with following operation. Preset the set value suitable for your purpose.

