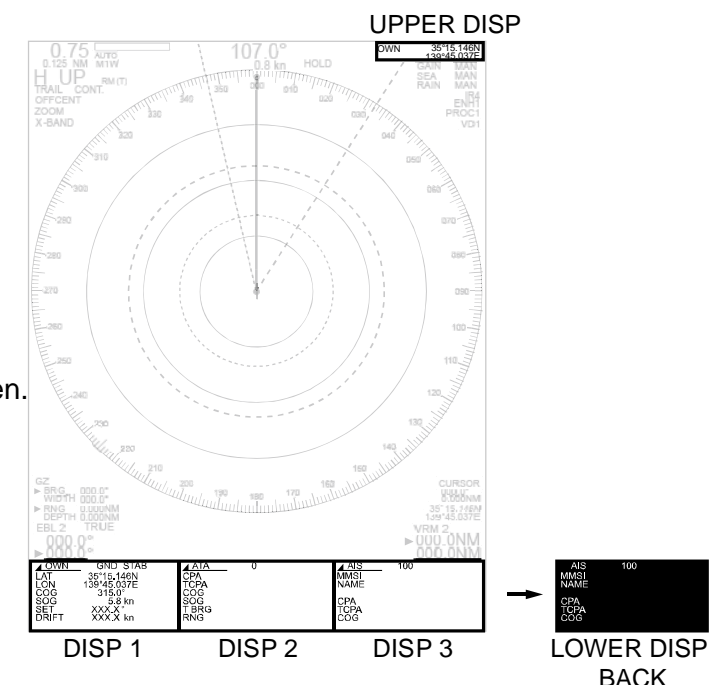


It is necessary to release protection to display those functions.

| |
|----------|
| MARKER |
| ECHO |
| NAV |
| ALARM |
| ATA/EPA |
| AIS |
| CHART |
| DATADISP |
| STARTUP |

| | | |
|-----------------------------|--|--|
| CHART | OFF, ON | * Displays only when C-MAP card is inserted. |
| PAST CRS SETUP | 1-30 | ATA: After setting, point a cursor on an acquired/tracking target by ATA and then push [ENT] key to start recording and display. For the recording target, the number of trail recorded will be displayed as " / " at the right side. On the menu, the number of target will be also displayed at the side of the number of trail. |
| PLOT INT CLEAR | 1-30 | Set up track-memory interval (time). Delete memorized track. |
| WPT/ROUTE MARK | OFF, ON | Effective only when way point/route information are input from external devices. 20 blocks mark input function and 50 points input per each block is capable. |
| BLOCK NO | 1 to 20 | Select block number of mark display. |
| BLOCK CLEAR | CANCEL, CLEAR | Delete unnecessary mark data. |
| LINE | OFF, ON | Point a cursor on a mark displayed and push "ENT" key, then the position of own ship and the mark will be connected with a dotted line. |
| SHAPE | | Select mark shape from 18 types. |
| OWN | | Input mark on own ship position. |
| CURSOR | | Input mark on cursor position. |
| SETUP | 1-50 | Input mark by LAT/LON. |
| DISP ALL | OFF, ON | All marks for total 20 blocks are displayed. |
| CHART SELECT | JAPAN, GLOBAL | Select global chart in English mode automatically. |
| CHART DISP SET | | Chart setting: color, place name, lighthouse, buoy, etc. * Displays only when C-MAP card is inserted. |
| NAV ALIGN MODE | OFF, MANUAL, SERIAL | Manual and serial signal methods are available for position compensation. |
| NAV ALIGN LAT | -1.000 to 1.000 | Correction for latitude of chart display. |
| NAV ALIGN LON | -1.000 to 1.000 | Correction for longitude of chart display. |
| WPT/ROUTE ID | OFF, ON | Effective only when way point/route information are input from external devices. |
| WPT FLAG | OFF, ON | Effective only when way point/route information are input from external devices. |
| COAST LINE/GPS BUOY | COAST LINE, GPS BUOY | Selection of function to produce coast line by itself or to display GPS buoys. |
| COAST LINE | | Can generate 50-point x 20 blocks. |
| GPS BUOY | | Can record 10-ID x 100-time, position, water temperature, etc. |
| UPPER DISP | STAB, COG/SOG, LAT/LON, LOP, SET/DRIFT, DEPTH/TEMP, WPT LAT/LON, WPT BRG/RNG, INFO, TIME, VECTOR, OFF, select from 12 items. | |
| LOWER DISP BACK | OFF, ON | Setup background of lower screen display area. |
| DISP1 | OFF, OWN1, OWN2, WPT, ATA/EPA, AIS, NAV, AIS DETAIL1, AIS DETAIL2 | |
| DISP2 | OFF, OWN1, OWN2, WPT, ATA/EPA, AIS, NAV, AIS DETAIL1, AIS DETAIL2 | |
| DISP3 | OFF, OWN1, OWN2, WPT, ATA/EPA, AIS, NAV, AIS DETAIL1, AIS DETAIL2 | |
| PROTECT CANCEL (OR) PROTECT | | |
| TUNE SELECT | AUTO, MANUAL | Select tuning method. |
| TUNE AUTO | 0 to 255 | Auto tune setting. |
| TUNE MANUAL | 0.0 to 100.0 | Manual tune setting. |
| BRG ADJ | -180.0 to 180.0° | Adjust calibration of actual image bearing to align to bearing on the rader screen. |
| TX DELAY ADJ | 0 to 255 | |
| STC CURVE1 | 0 to 15 | |
| MBS | 0 to 30 | |
| F1 KEY SET | RANGE RINGS, BRG TRUE/REL, DAY/NIGHT, MODE, TRAILS, IR, PROCESS, ZOOM, TM RESET, HOLD, VECT TRUE/REL, ALARM1, GUARD ZONE, ACQ, DELETE, ALL DELETE, AUTO DETECT, TARGET, UPDATE, CHART, MARK OWN, MARK CURSOR, TLL OUT, UPPER DISP, VIDEO MODE, SHORTCUT, OFF | |
| F2 KEY SET | Same as F1 key setting | |
| F3 KEY SET | Same as F1 key setting | |
| RAIN KEY SET | Same as F1 key setting | |
| SEA KEY SET | Same as F1 key setting | |
| GAIN KEY SET | Same as F1 key setting | |



* MDC-2500 series only

It is necessary to release protection to display those functions.