

Header icons: N Shift: Range: Gain L2:6.0 L1:6.0 H2:6.0 H1:6.0

(1) Range Mode
Blank : Manual
Auto Range : Auto Range
Auto Shift : Auto Shift

(2) Normal/Zoom N Normal Zoom
Same Indiv.

(3) Shift status Same Indiv.

(4) Range status Same Indiv.

(5) Gain setting
H1 : Hi-Freq. 1
H2 : Hi-Freq. 2
L1 : Lo-Freq. 1
L2 : Lo-Freq. 2
**Vaule stands for current setting.*

(6) CM status CM1 ~ CM6

(7) Alarm set status
Arrival Bottom W. Temp
XTE Fish Speed

(8) Image Speed
Speed1 Stop Speed2 Speed3-9

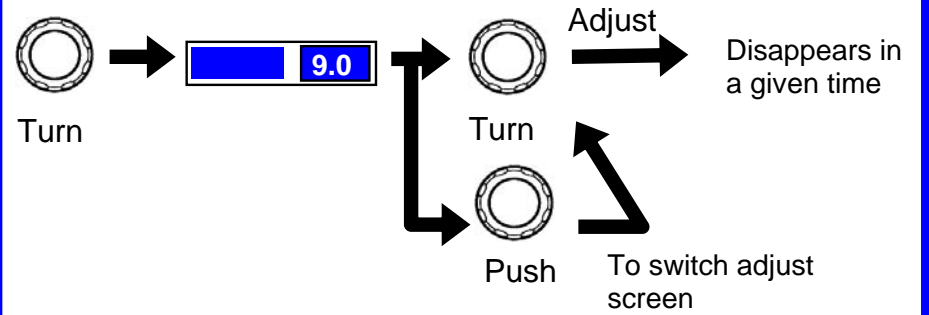
(9) [EVENT] key assignment
Store Position Store Image Homing

(10) [F1] [F2] key assignment
Shift Digit Input A Scope
IR Image Swap
Color Erase Image Title
Noise Rejection VRM Interval
Background Color Sona-Tone
TVG Adjust NAV Start
White Line Image Recall

(11) SD Card* (12) USB Memory*
**(11)(12) are only for CVS-FX2/FX2BB*

Explanation of header icons

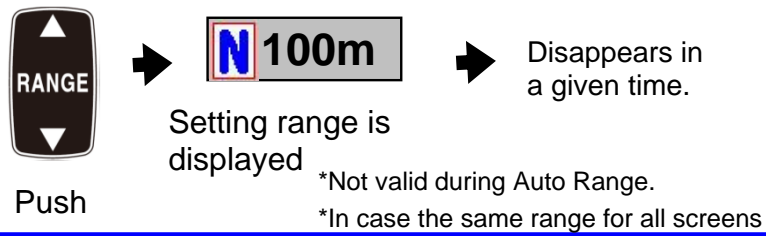
Gain adjustment



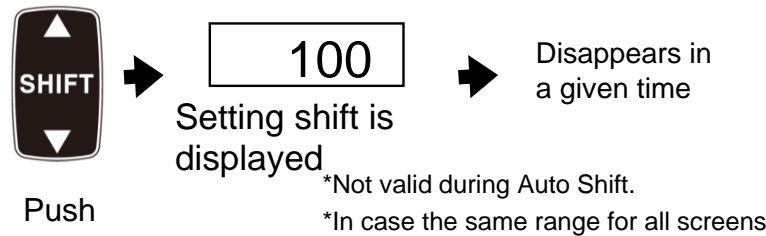
To adjust gain, use the following GAIN knob:

- 1 screen: GAIN-R knob
- 2 screens: GAIN-R knob for the right screen, GAIN-L knob for the left
- 3/4 screens: GAIN-R knob for the 2 right screens, GAIN-L knob for 2 left. Use GAIN-R knob for the middle screen, in case of 3 screens.

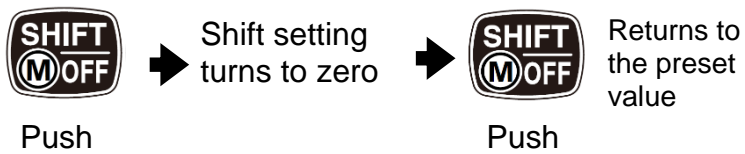
Select Range ([▲RANGE▼] key)



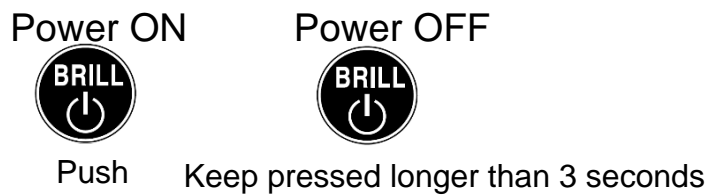
Set Shift ([▲SHIFT▼] key)



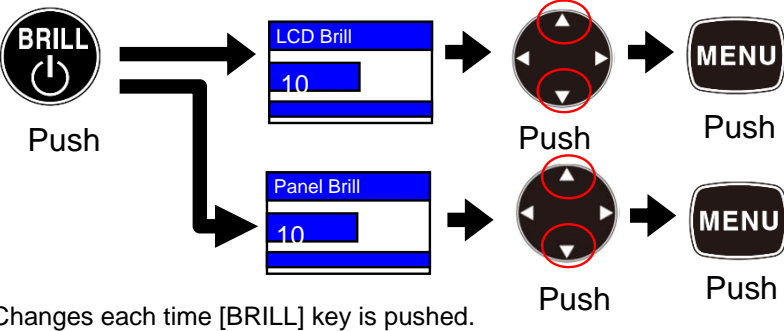
Turn OFF Shift ([SHIFT/M]OFF key)



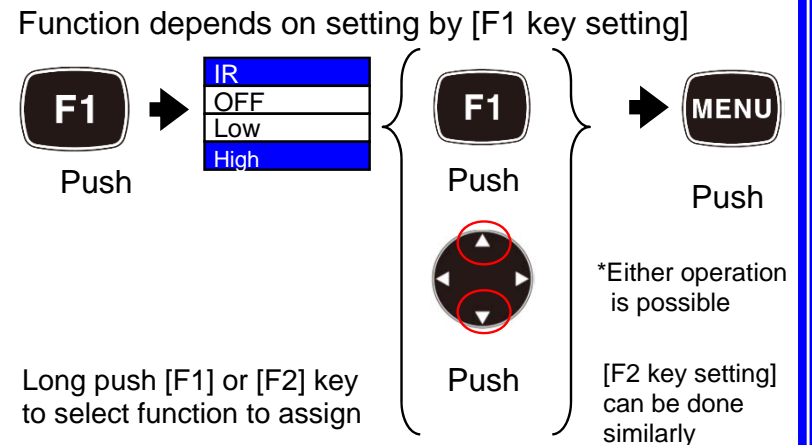
Power ON/OFF ([BRILL] key)



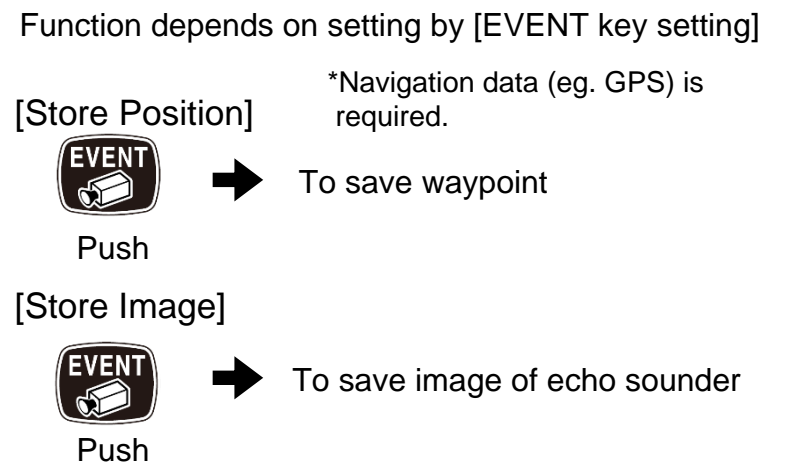
Adjust Brightness ([BRILL] key)



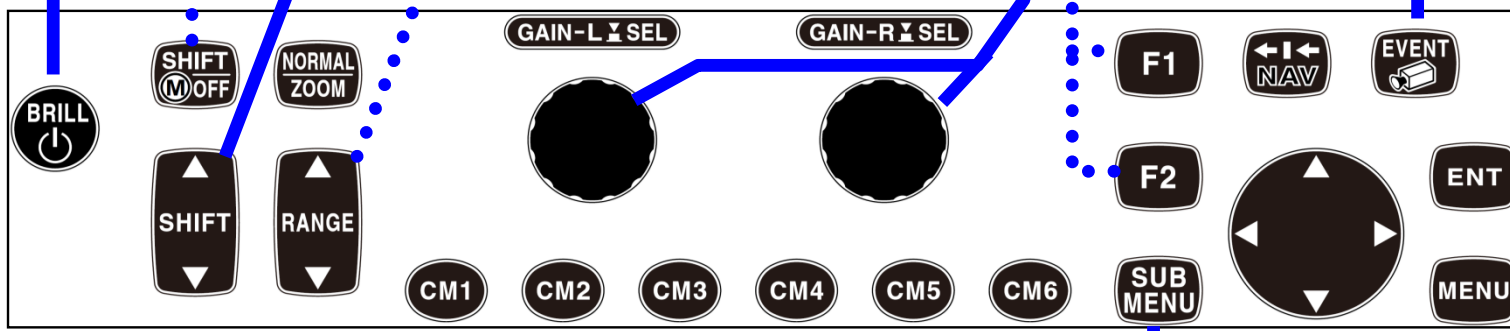
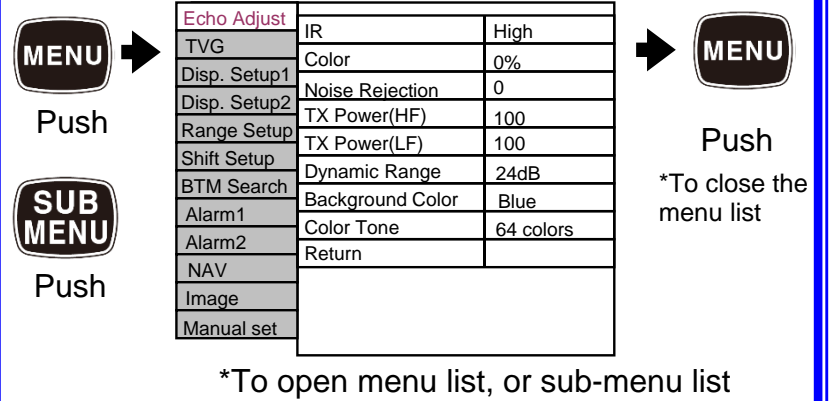
Select Settings of Saved Function ([F1]/[F2] key)



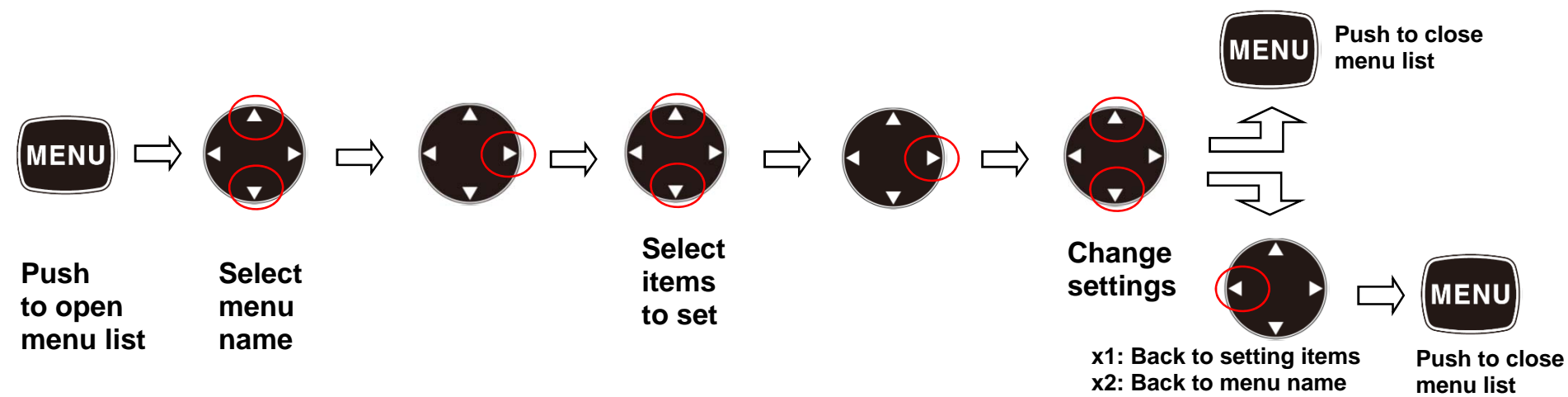
Store Position / Store Image ([EVENT] key)



Display Menu List ([MENU] key)



● To operate menu

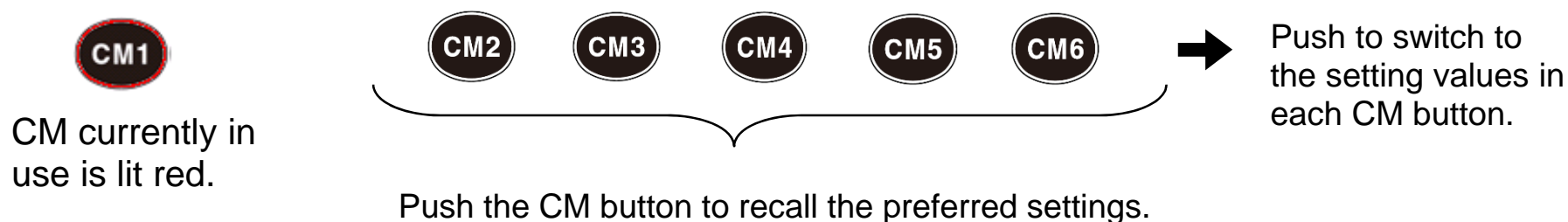


● To change contents of CM (Condition Memory) keys

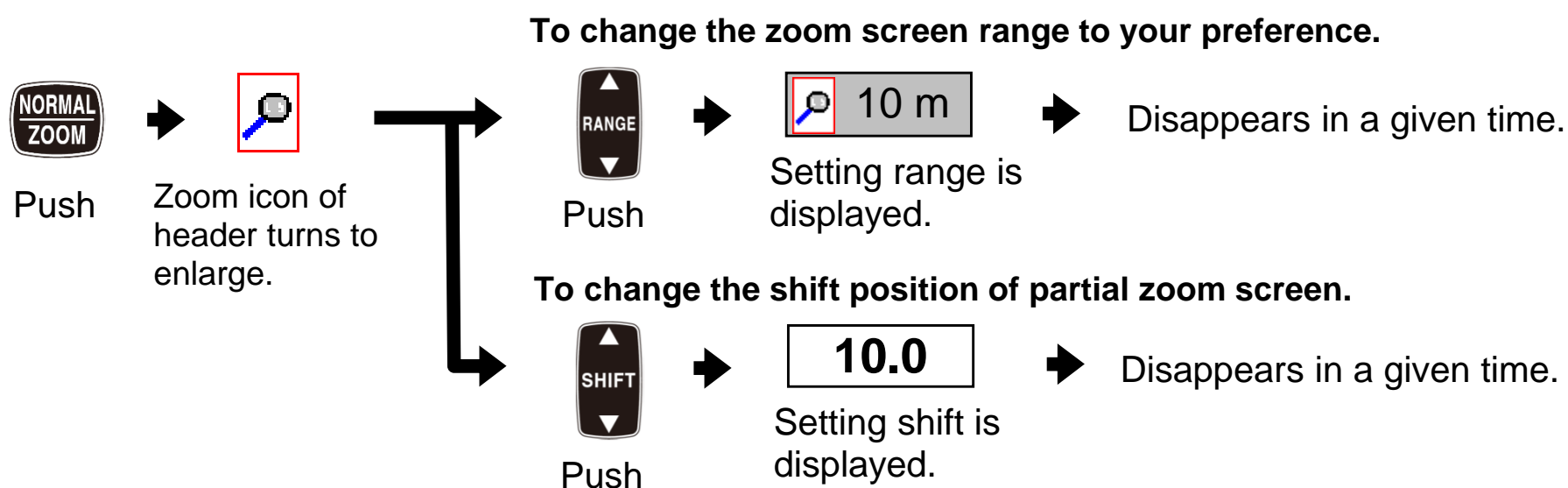
One set of the setting values can be switched by using CM keys. Some setting items are in common use, such as language selection, types of Transducers, etc.

Switching by CM1 to CM6 keys makes it possible to use functions as if you were using 6 different echo sounders.

You can switch the settings simply by pushing buttons, among the preferred values saved for different fish types, seasons, fishing points.



● To change zoom range and shift position of partial zoom



● To change contents of CM Menu

Settings for screen configuration, adding zoom screen and frequency change can be done in the CM menu to your preference.

