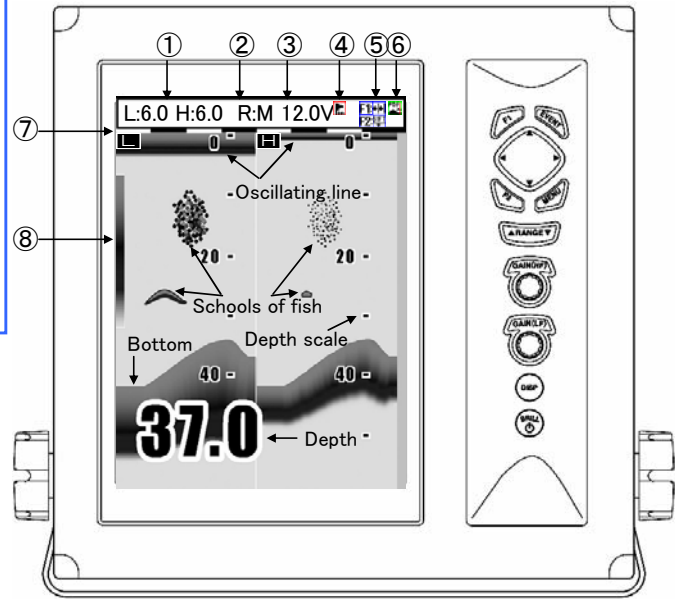


- ① Gain setting
H: High frequency
L: Low frequency
※The number shows the present set value of gain.
- ② Range mode
R:M : Manual
R:A : Auto range
R:AS : Auto shift
- ③ Power Voltage
- ④ Alarm Set Status
← Arrival alarm
← XTE alarm
← Water temp alarm
← Speed alarm
- ⑤ Status of [F1]/[F2] key assignment
← Image speed
← Interference rejection
← Color rejection
← Noise rejection
← Shift
← Zoom range
← Zoom start
← A scope
← White line
← Background color
- ⑥ Status of [EVENT] key assignment
← Store position
← Store image
← Fishing hot spot
- ⑦ Time mark
- ⑧ Rainbow pattern



Select the setting of preset function ([F1]key / [F2]key)

The function differs depending on the [F1/F2 key setting].
In case of [Image speed]:

Press **[F1]** →

Image Speed
Speed1
Speed2
Speed3
Speed4
Stop
Speed5 (1/1)
Speed6
Speed7
Speed8
Speed9

 → Press **[MENU]**

Press **[F2]** →

Image Speed
Speed1
Speed2
Speed3
Speed4
Stop
Speed5 (1/1)
Speed6
Speed7
Speed8
Speed9

 → Press **[MENU]**

※Select by performing either operation.

※By continuously pressing the [F1]/[F2] key, a function assigned to each key can be selected.

Select the range ([▲RANGE▼] key)

Press **[▲RANGE▼]** →

Range
Auto range
5.0
10.0
20.0
50.0
100
160
300
500
Auto shift

 → Press **[MENU]**

Press **[▲RANGE▼]** →

Range
Auto range
5.0
10.0
20.0
50.0
100
160
300
500
Auto shift

 → Press **[MENU]**

※Select by performing either operation.

Select the display menu ([DISP] key)

Press **[DISP]** →

Disp
NAV 1
Normal (H)
Zoom (H)
Dual freq
Zoom (L)
Normal (L)
NAV 2

 → Press **[MENU]**

Press **[DISP]** →

Disp
NAV 1
Normal (H)
Zoom (H)
Dual freq
Zoom (L)
Normal (L)
NAV 2

 → Press **[MENU]**

※Select by performing either operation.

Power on/Power off ([BRILL] key)

Power on. Press **[BRILL]**

Power off. Keep pressing for more than 3 seconds. Press **[BRILL]**

Adjust the brilliance ([BRILL] key)

Press **[BRILL]** →

Panel brill
1.0

 → Rotate → Press **[MENU]**

Press **[BRILL]** →

Lcd brill
1.0

 → Rotate → Press **[MENU]**

※Every time when pressing the [Brill] key, the item is alternately displayed.

Preset the destination / Preset the image ([EVENT] key)

Depending on the [EVENT key set], the function differs.

In case of [Store pos]:
Press **[EVENT]** → Store the destination.

In case of [Store image]:
Press **[EVENT]** → Store the image of echo sounder.

※The navigation data such as GPS is necessary.

Display the menu ([MENU] key)

Press **[MENU]** →

Adjust	Image speed	Speed5
D.range	IR	Strong
Display1	Color rejection	0%
Display2	Noise rejection	0
Alarm1	TX power	Auto
Alarm2	Gain (TD)	
NAV	Pulse width	Middle
Image	Band width	Middle
System	Return	
Next		

 → Press **[MENU]**

※The menu closes.

※The menu appears.

Gain adjust / TVG select ([Knob] key)

Press or Rotate **[Knob]** →

Gain
9.0

 → Adjust → Press **[MENU]**

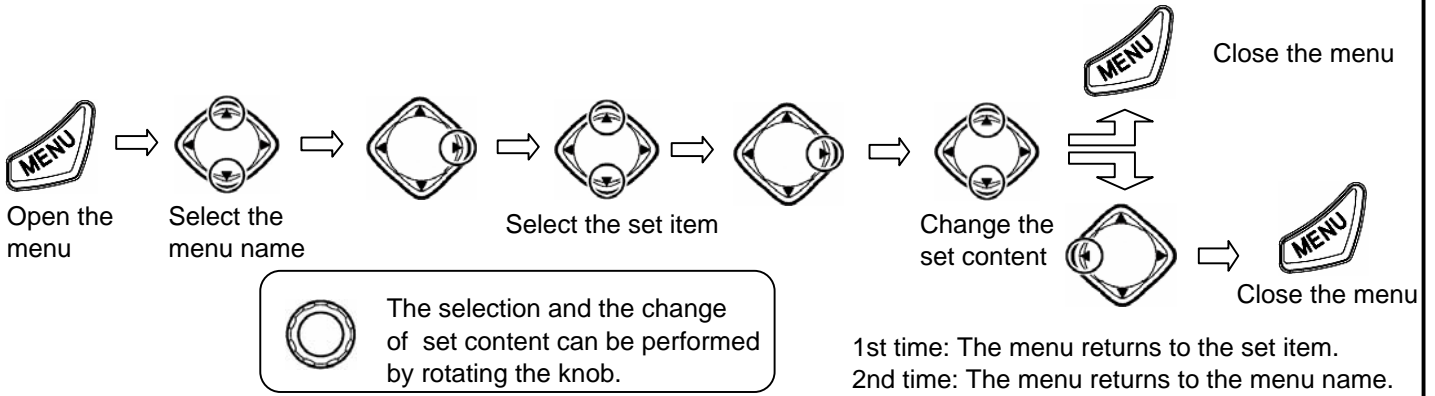
Press **[Knob]** →

TVG
Weak
Medium
Strong
Auto

 → Press **[MENU]**

※[GAIN (HF) Knob] key can adjust high frequency.
※[GAIN (LF) Knob] key can adjust low frequency.

●How to operate the menu



●Function of Adjust Set Menu

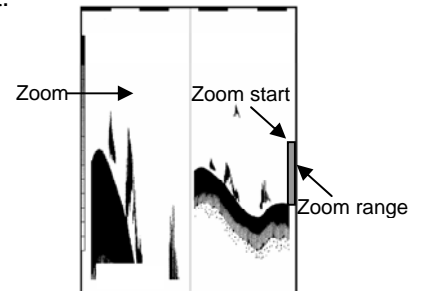
Adjust	Image speed	Speed5	①
D.range	IR	Strong	②
Display1	Color rejection	0%	③
Display2	Noise rejection	0	④
Alarm1	TX power	Auto	⑤
Alarm2	Gain(TD)		⑥
NAV	Pulse width	Middle	
Image	Band width	Middle	
System	Return		
Next			

- Change the image speed.
The image speed becomes slow in order of [Speed1]→[Speed2]→...→[Speed9].
When [stop] is selected, the image stops.
- It rejects the interference with other echo sounder.
When [Strong] is selected, the effect of rejection is strong.
- It rejects the weak noise appeared on the display.
The greater the number is, the stronger the rejection becomes.
- It rejects the speck-like noise appeared on the entire image.
The greater the number is, the stronger the rejection becomes.
- It sets the TX power.
- The reduction in sensitivity due to signal attenuation in Gain(TD) use and so on can be corrected.
You can make numerical value bigger at the time of lack of sensitivity.

●Function of display range set menu

Adjust	Shift step	1m	①
D.range	Zoom type	BTM.	②
Display1	Zoom range	10.0m	③
Display2	Zoom start	0m	④
Alarm1	Disp width	Center	⑤
Alarm2	Range preset		⑥
NAV	Return		
Image			
System			
Next			

- It sets the quantity of movement of shift.
- It selects the kind of the zoom type.
- It sets the range of image selected in ②.
- It sets the zoom starting position of image set in ②.
- It selects the disp width.
- It presets the range.



●Preset of Range

Registration of the range can be easily changed with following operation. Preset the set value suitable for you purpose.

