

**NEW**

**KODEN**

Digital Searchlight Sonar

((DIGITAL))

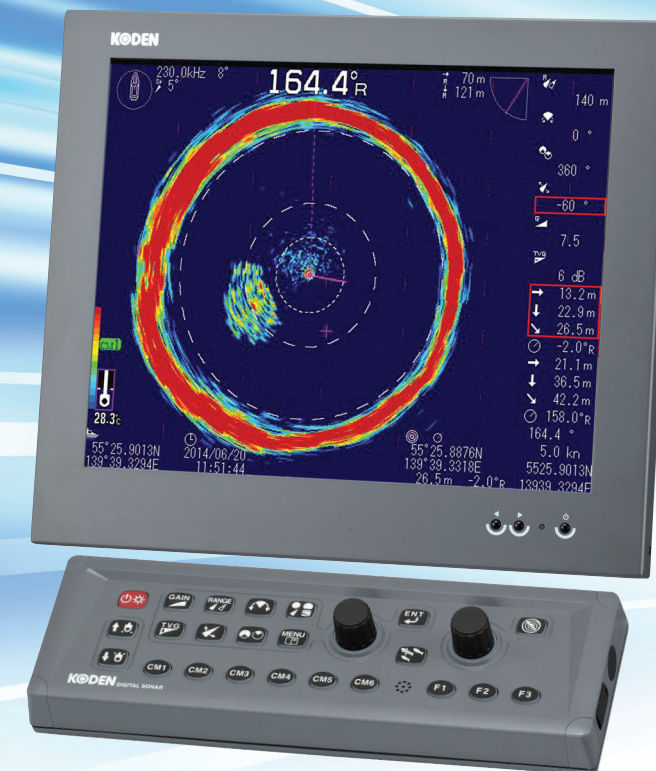
# KDS-5500BB

High sensitivity over long range!

80/140/180 kHz

Selectable Frequency at time of purchase

17 inch LCD monitor (optional)

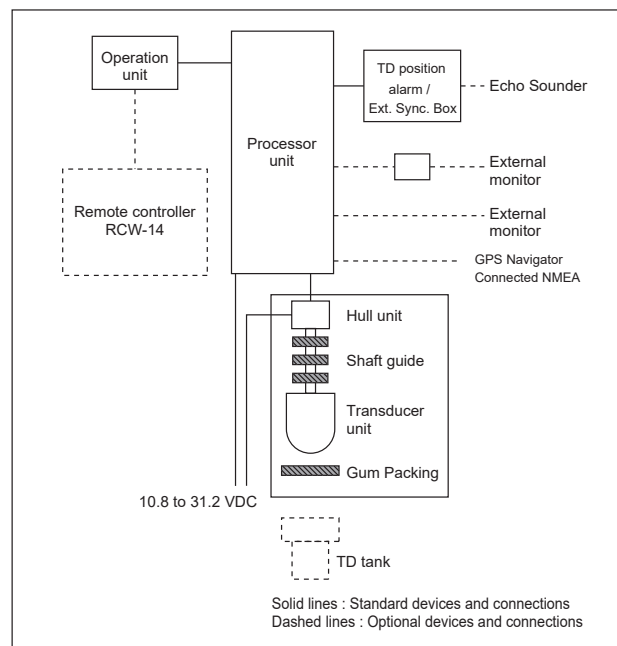


Black box type

**SPECIFICATIONS**

Model	KDS-5500BB										
Output power (RMS)	1.5 kW										
Output frequency	80 kHz, 140 kHz, 180kHz (Select at time of purchase)										
Tilt angle	5° to 90° (1° step)										
Beam angle	80 kHz : 19° / 140 kHz : 12° / 180 kHz : 10°										
TD stroke	150 to 380 mm (Recommended value 150 mm)										
Display size and type	Any monitor with VGA resolution (Owner supplied)										
Basic ranges	10 to 1000 (m), 10 to 700 (Lfm), 30 to 3000 (ft), 10 to 600 (fm) (8 ranges can be set to users choice)										
Range units	m, fm, ft, Lfm										
Scanning sector angles	Sonar mode 5° step: 5°, 25°, 45°, 85°, 125°, 165°, 205°, 360° 10° step: 10°, 30°, 50°, 90°, 130°, 170°, 210°, 360° 15° step: 15°, 45°, 75°, 105°, 135°, 165°, 225°, 360° 20° step: 20°, 60°, 100°, 140°, 180°, 220°, 260°, 360° Bottom scan mode 3° step: 3°, 27°, 45°, 63°, 93°, 117°, 147°, 177° 5° step: 5°, 25°, 45°, 65°, 95°, 115°, 145°, 175°										
360° Scanning range(m)	20	40	60	80	100	120	160	180	200	240	400
Scanning time	6.3	8	10	11.8	14	15.8	19.5	21.6	23.5	27.5	43.3
(extracts)	3.3	3.7	4.3	4.9	5.7	6.4	7.9	8.2	8.9	10.3	15.7
20° step	3.3	3.4	3.8	4.2	4.8	5.2	6.4	6.6	7.3	8.1	12.2
Bearing center	1° step										
Presentation modes	Sonar, Off-center, Bottom scan, Echo sounder, 2 Mode Display, One line										
Off-Center	Fore, Back, Left, Right										
Target lock	Reverse, Horizontal, Horizontal + Vertical, Marker + Horizontal, Marker + Horizontal + Vertical										
Presentation colors	8 colors, 16 colors										
Functions	TVG, Color rejection, Dynamic range, Compass display, Pulse width, Output power control, Noise reduction, A-scope, CM key, Frequency bandwidth, Image correction, Bearing display, TD auto up, Sona-Tone™										
Language	English, Japanese, Korean, Spanish, Thai, Traditional Chinese, Greek, Italian, Portuguese, Burmese										
Input data format and sentences	NMEA0183 GGA, GLL, HDG, HDM, HDT, RMC, THS, VTG, ZDA										
Output data format and sentences	NMEA0183 DBT, DPT, GGA, GLL, MTW, RMC, TLL, VTG, ZDA										
NMEA ports	Total 1 : input / output										
Power supply Processor unit	10.8 to 31.2 VDC										
Hull unit	10.8 to 31.2 VDC										
Power consumption Processor unit	70 W or less (24 VDC)										
Hull unit	70 W or less (24 VDC)										
Operating temperature	-15 °C to +55 °C										
Water protection	-										

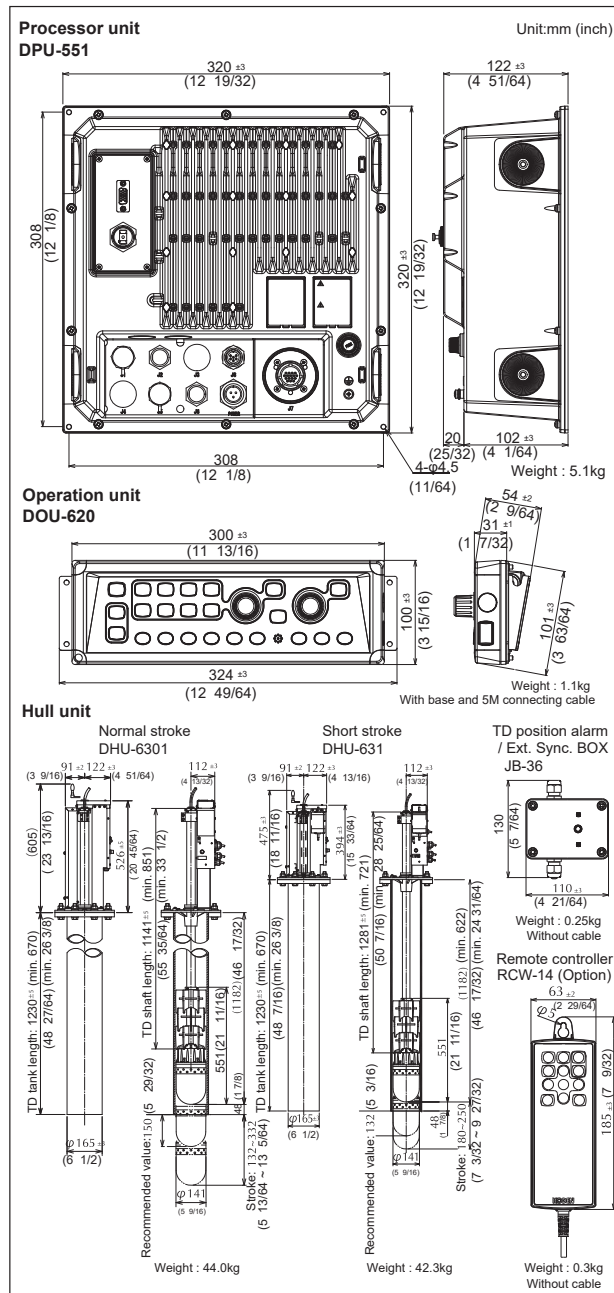
**CONNECTIONS**



**EQUIPMENT LIST**

Standard equipment	Processor unit	1
	Operation unit	1
	Hull unit (Normal stroke / Short stroke)	1
	Accessories for Processor unit	1
	Installation materials for Hull unit	1
	TD position alarm / Ext. Sync. Box	1
	DC power cable	1
Options	Operation manual, Installation manual, Quick Reference	1
	Remote controller, PVC TD tank, FRP TD tank, Shaft guide for FRP tank	
	AC rectifier unit, Connecting cable, 17 inch LCD monitor	

**DIMENSIONS AND WEIGHT**



• Design and specifications are subject to change without notice.

**KODEN** Koden Electronics Co., Ltd.

Tamagawa Office:  
2-13-24 Tamagawa, Ota-ku, Tokyo, 146-0095 Japan  
Tel: +81-3-3756-6501 Fax: +81-3-3756-6509  
Uenohara Office:  
5278 Uenohara, Uenohara-shi, Yamanashi, 409-0112 Japan  
Tel: +81-554-20-5860 Fax: +81-554-20-5875

overseas@koden-electronics.co.jp  
www.koden-electronics.co.jp

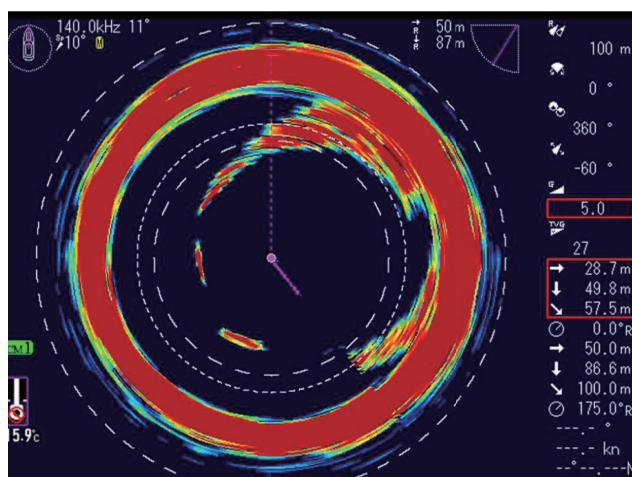
**Safety precaution** To ensure proper and safe use of the equipment, please carefully read and follow the instructions in the Operation Manual.

For details, please contact:

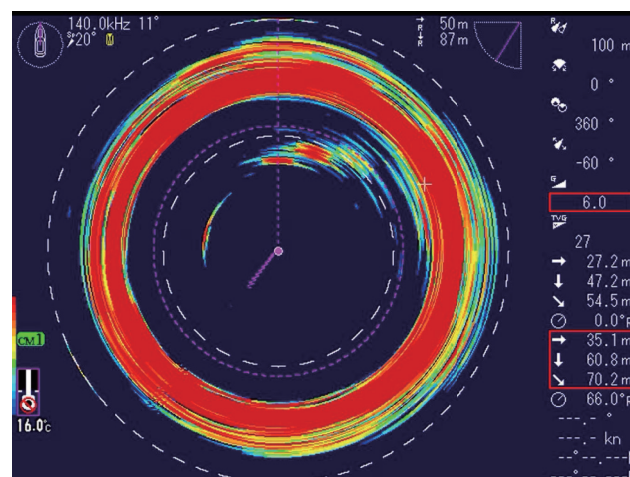
## High Sensitivity fixed frequency model KDS-5500BB

### Image comparison of KDS-5500BB and Broadband sonar

#### Shallow water (100m)

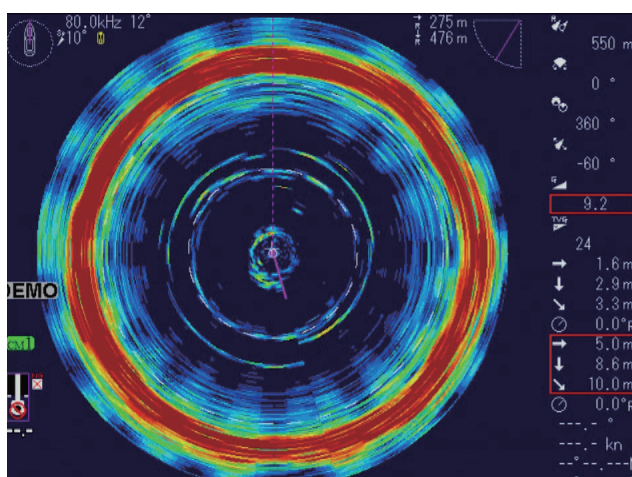


KDS-5500BB 140kHz

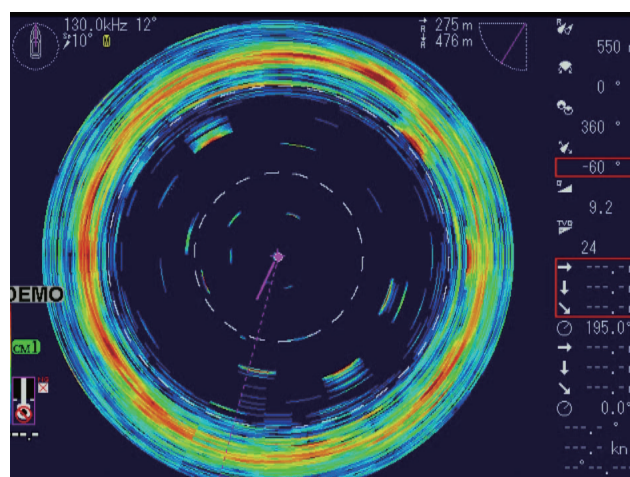


Broadband 140kHz

#### Deep water (550m)



KDS-5500BB 80kHz



Broadband 130kHz

## Recommended sonar selection

### What fits you better?

- ▼ Target specific fish species and use only one frequency:  
**KDS-5500BB**
- ▼ Using sonar for different fishing, different areas, different seasons:  
**Broadband Sonar**

## Featured option

### Reduce image distortion using motion sensor (AS model)



When stabilizer function is activated, it reduces image distortion caused by pitch and roll of the vessel in high seas.

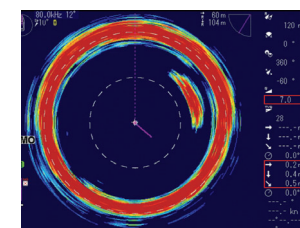
### Compact hull unit

### Limited room for installation?

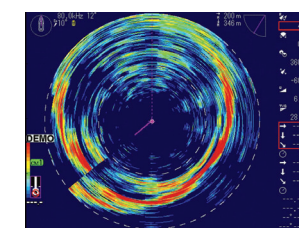
- ▼ Solved with a short hoist version, requires 13cm less room.



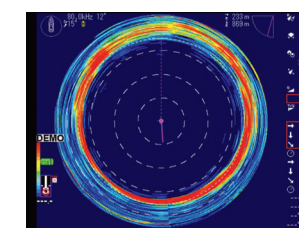
## Screen image of KDS-5500BB/80 kHz



Sardine



Red snapper



Depth 680m