

## Digital Sonar KDS-6000BB

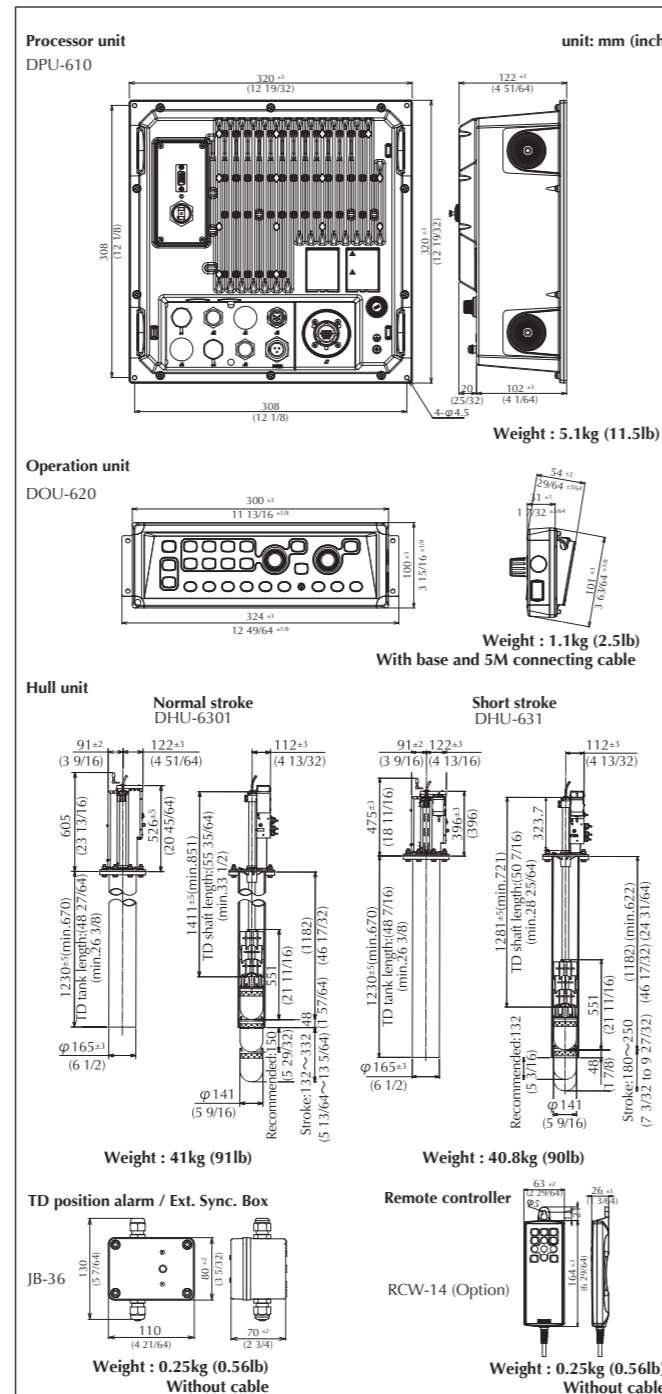
### SPECIFICATIONS

|                                  |  |
|----------------------------------|--|
| Model                            | KDS-6000BB   |
| Output power (RMS)               | 1.5 kW   |
| Transducer                       | DHU-6302-BRD.B / BRD.B(AS)   |
| Output frequency                 | 130 to 210 kHz (0.1 kHz step)  |
| Tilt angle                       | 5° to -90° (1°step)  |
| Beam angle                       | 8° to 12°  |
| TD stroke                        | 150 to 380 mm (Recommended value 150 mm)   |
| Display size and type            | Any monitor with VGA resolution (Owner supplied)   |
| Basic ranges                     | 10 to 1000 (m), 30 to 3000 (ft), 10 to 600 (fm), 10 to 700 (Lfm)<br>(8 ranges can be set to users choice)  |
| Range units                      | m, ft, fm, Lfm   |
| Scanning sector angles           | Sonar mode<br>5°step: 5°, 25°, 45°, 85°, 125°, 165°, 205°, 360°<br>10°step: 10°, 30°, 50°, 90°, 130°, 170°, 210°, 360°<br>15°step: 15°, 45°, 75°, 105°, 135°, 165°, 225°, 360°<br>20°step: 20°, 60°, 100°, 140°, 180°, 220°, 260°, 360°<br>Bottom scan mode<br>3°step: 3°, 27°, 45°, 63°, 93°, 117°, 147°, 177°<br>5°step: 5°, 25°, 45°, 65°, 95°, 115°, 145°, 175°                  |
| 360° Scanning time (extracts)    | Scanning range (m) 20 40 60 80 100 120 160 180 200 240 400<br>Scanning time (sec.) 5°step 6.3 8 10 11.8 14 15.8 19.5 21.6 23.5 27.5 43.3<br>Scanning time (sec.) 10°step 3.7 4.7 5.6 6.5 7.6 8.6 10.6 11.5 12.5 14.4 22.4<br>Scanning time (sec.) 15°step 3.3 3.7 4.3 4.9 5.7 6.4 7.9 8.2 8.9 10.3 15.7<br>Scanning time (sec.) 20°step 3.3 3.4 3.8 4.2 4.8 5.2 6.4 6.6 7.3 8.1 12.2 |
| Bearing center                   | 1°step   |
| Presentation modes               | Sonar, Off-center, Bottom scan, Echo sounder,<br>2 Mode Display, One line  |
| Off-Center                       | Fore, Back, Left, Right  |
| Target lock                      | Reverse, Horizontal, Horizontal + Vertical, Marker + Horizontal,<br>Marker + Horizontal + Vertical   |
| Presentation colors              | 8 colors, 16 colors  |
| Functions                        | TVG, Color rejection, Dynamic range, Compass display,<br>Pulse width, Output power control, Noise reduction, A-scope,<br>CM key, Frequency bandwidth, Image correction,<br>Bearing display, TD auto up, Sona-Tone™   |
| Language                         | English, Japanese, Korean, Spanish, Thai, Traditional Chinese,<br>Greek, Italian, Portuguese, Burmese  |
| Input data format and sentences  | NMEA0183<br>GGA, GLL, HDG, HDM, HDT, RMC, THS, VTG, ZDA  |
| Output data format and sentences | NMEA0183<br>DBT, DPT, GGA, GLL, MTW, RMC, TLL, VTG, ZDA  |
| NMEA ports                       | Total 1: input / output  |
| Power supply                     | Processor unit 10.8 to 31.2 VDC<br>Hull unit 10.8 to 31.2 VDC  |
| Power consumption                | Processor unit 70 W or less (24 VDC)<br>Hull unit 70 W or less (24 VDC)  |
| Operating temperature            | -15 °C to +55 °C   |
| Water protection                 | -  |

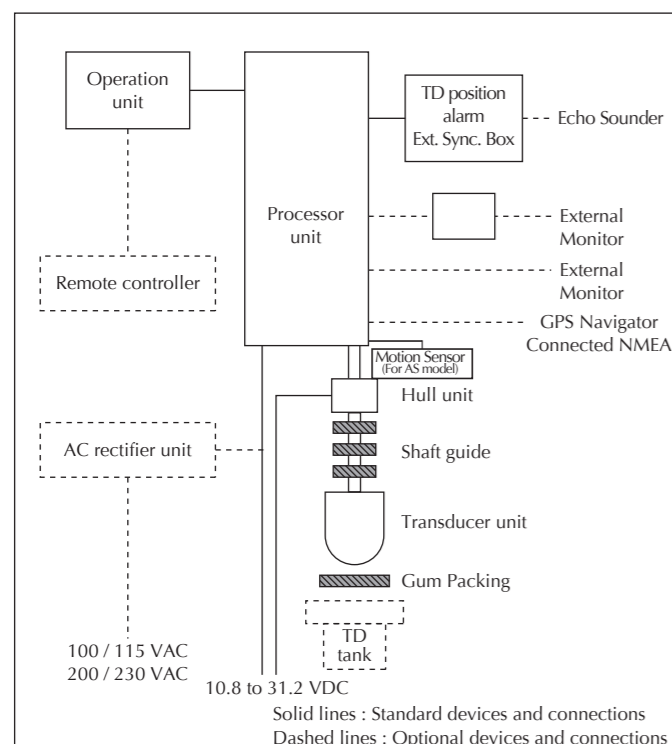
### EQUIPMENT LIST

|                    |  |   |
|--------------------|--|---|
| Standard equipment | Processor unit   | 1 |
|                    | Operation unit   | 1 |
|                    | Hull unit (Normal stroke / Short stroke)   | 1 |
|                    | Accessories for Processor unit   | 1 |
|                    | Installation materials for Hull unit   | 1 |
|                    | TD position alarm / Ext. Sync. Box   | 1 |
|                    | DC power cable   | 1 |
|                    | Operation manual, Installation manual, Quick Reference   | 1 |
| Options            | Remote controller, PVC TD tank, FRP TD tank, Shaft guide for FRP tank<br>AC rectifier unit, Connecting cable, 17/19 inch LCD monitor |   |

### DIMENSIONS AND WEIGHT

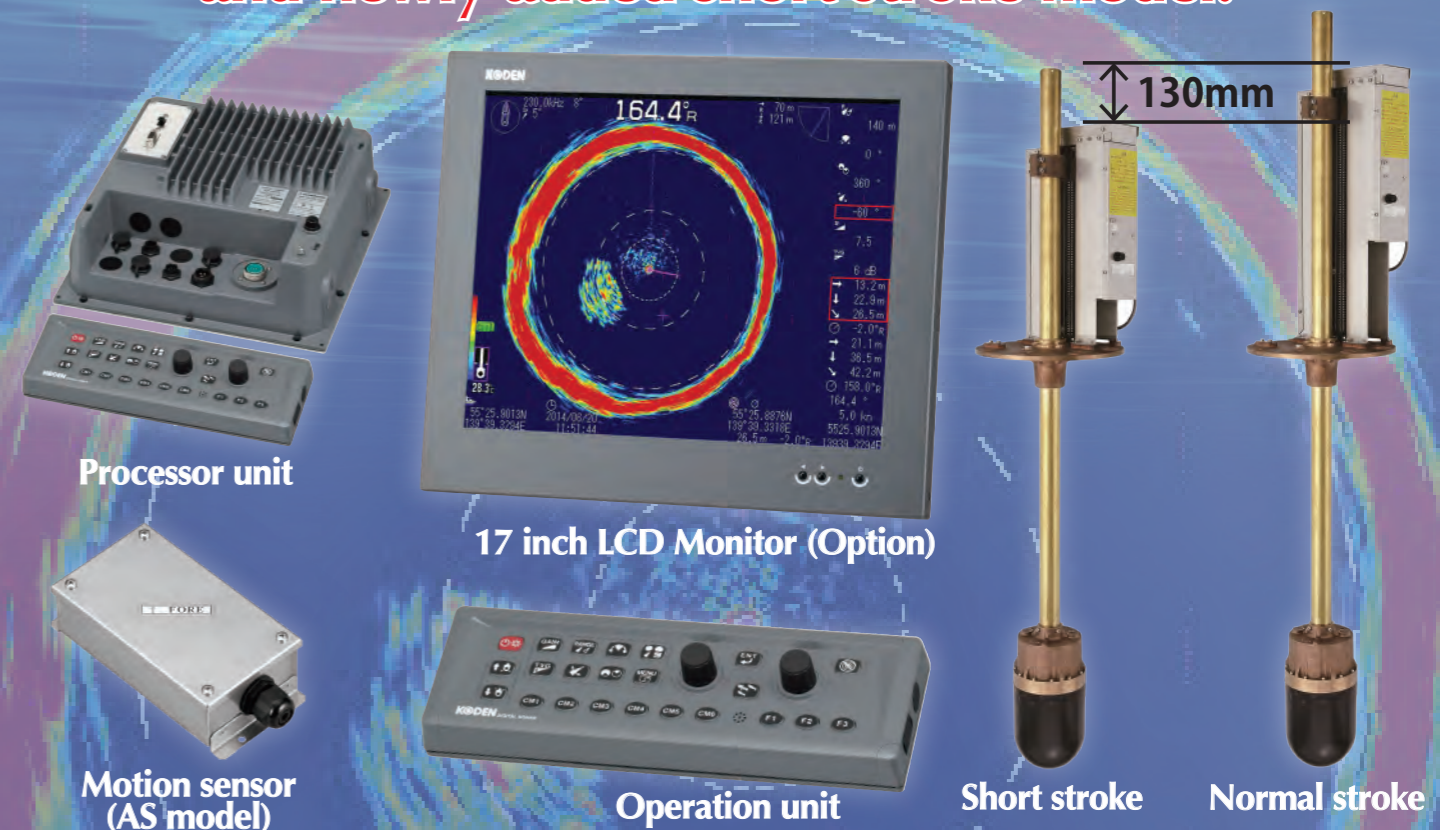


### CONNECTIONS



(((Broadband)))

**World first Broadband searchlight sonar**  
**Added motion sensor function**  
**and newly added short stroke model.**



### Features

- ▶ Change frequency on the go with our advanced Broadband Technology
- ▶ Massive improvement in scan speed, making detection of fish schools much faster
- ▶ Clearest possible images with our digital signal processing
- ▶ All setup and user settings changed instantly by utilizing Conditional Memory function
- ▶ Black Box sonar with 17/ 19 inch LCD Monitor available (Option)
- ▶ Short stroke Hull unit available for small space
- ▶ The stabilizer function reduces the disturbance of sonar display caused by the pitch and roll of the vessel (For AS model)



**Safety precaution** To ensure proper and safe use of the equipment, please carefully read and follow the instructions in the Operation Manual.

For details, please contact:



# Digital Sonar

# KDS-6000BB

## ● Advanced Broadband Technology

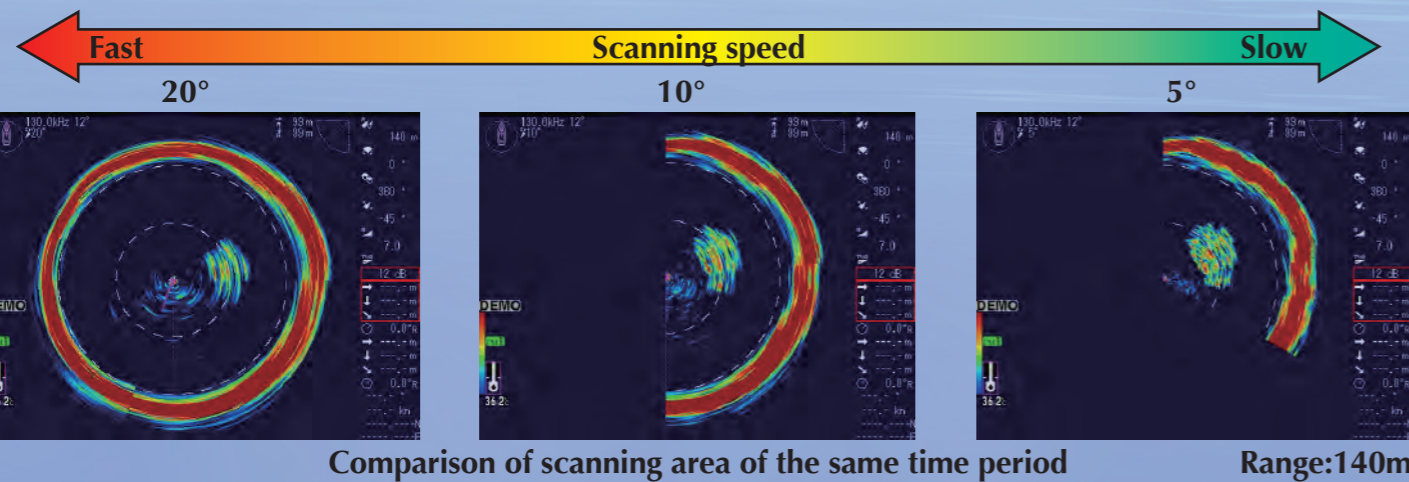
KDS-6000BB is world first Broadband searchlight sonar. With the broadband transducer equipped as standard, the most suitable output frequency can be selected in 0.1 kHz step depending on the fishing method and the target species from closer range to longer range. Selection of frequency is as easy and quick as tuning a radio. Flexible frequency selection enables user to tune outside of other vessel interference frequency, providing much cleaner image.

## ● Clearest possible images with our digital signal processing

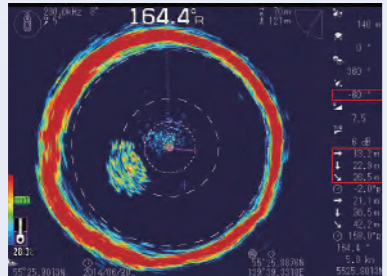
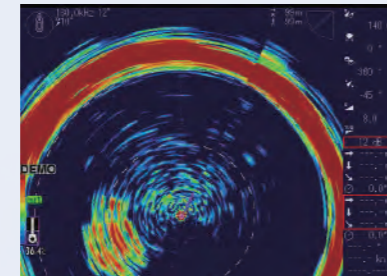
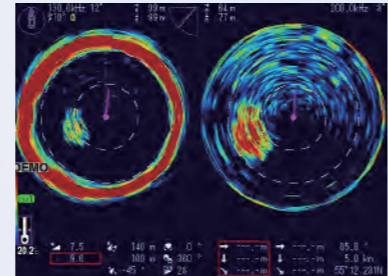
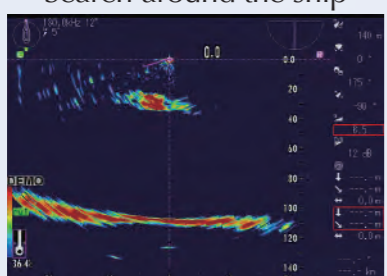
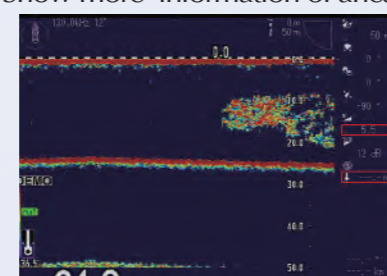
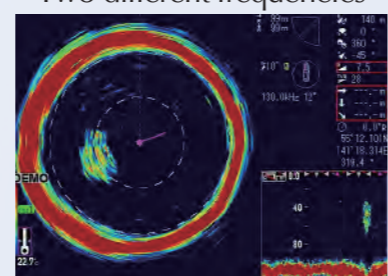
Both of high resolution in closer range and noise reduction performance in longer range are materialized at high level with newly-developed digital signal processing, KDP V.

## ● Massive improvement in scan speed

Scanning speed is remarkably increased by adding 15° and 20° in scanning sector angle steps. It can detect surrounding fish schools quickly.



## ● Six different presentation modes

|   |   |  |
|---|---|--|
|  |  |                    |
| <b>Sonar mode</b><br>Search around the ship   | <b>Off-center mode</b><br>Show more information of ahead                            | <b>Sonar x 2 mode</b><br>Two different frequencies   |
|  |  |                    |
| <b>Bottom scan mode</b><br>Reflected echo from underwater and sea bottom            | <b>Echo sounder mode</b><br>Image like Echo sounder                                 | <b>One line display mode</b><br>Show vertical Sonar image like an echo sounder image in the Sub-screen |

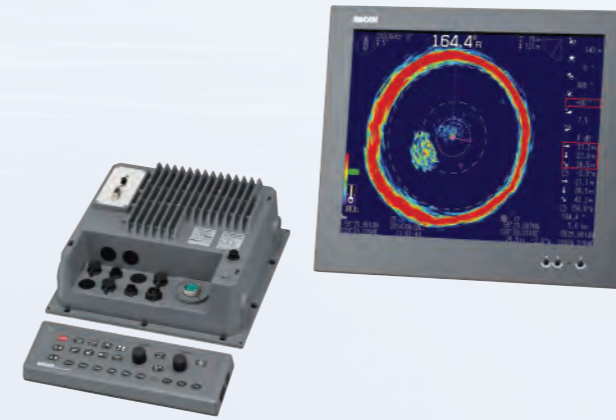
## ● CM keys



Six of CM keys

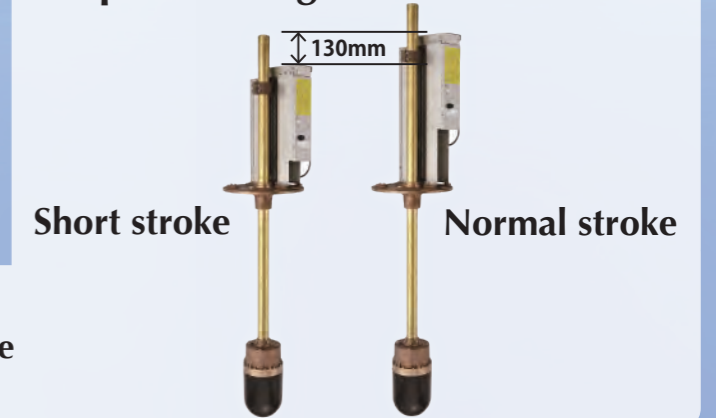
Six of CM (Condition Memory) keys offer the user to preset all the current settings and recall them instantly. It is like six sonars in one unit.

## ● Black box type



KDS-6000BB comes in black box. The user can select a monitor from the market or the optional 17 / 19 inch LCD monitor

## ● Space-saving Hull unit



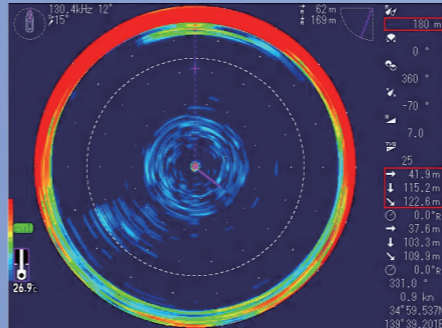
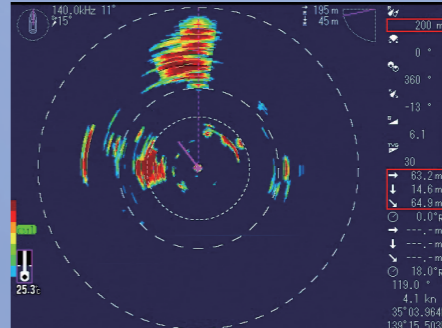
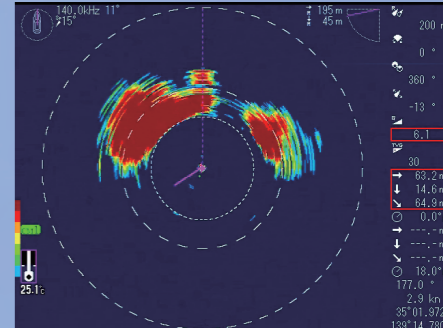
Short stroke Hull unit available for small space

## ● Motion sensor



The stabilizer function reduces the disturbance of sonar display caused by the pitch and roll of the vessel. (For AS model)

## ● Example of image

|   |   |   |
|---|---|---|
|  |  |  |
| <b>Spear squids at the sea bottom at 130.4 kHz</b>                                    | <b>Tunas attacking school of sardines at 140.0 kHz</b>                                | <b>Pilchars at 140.0 kHz</b>  |