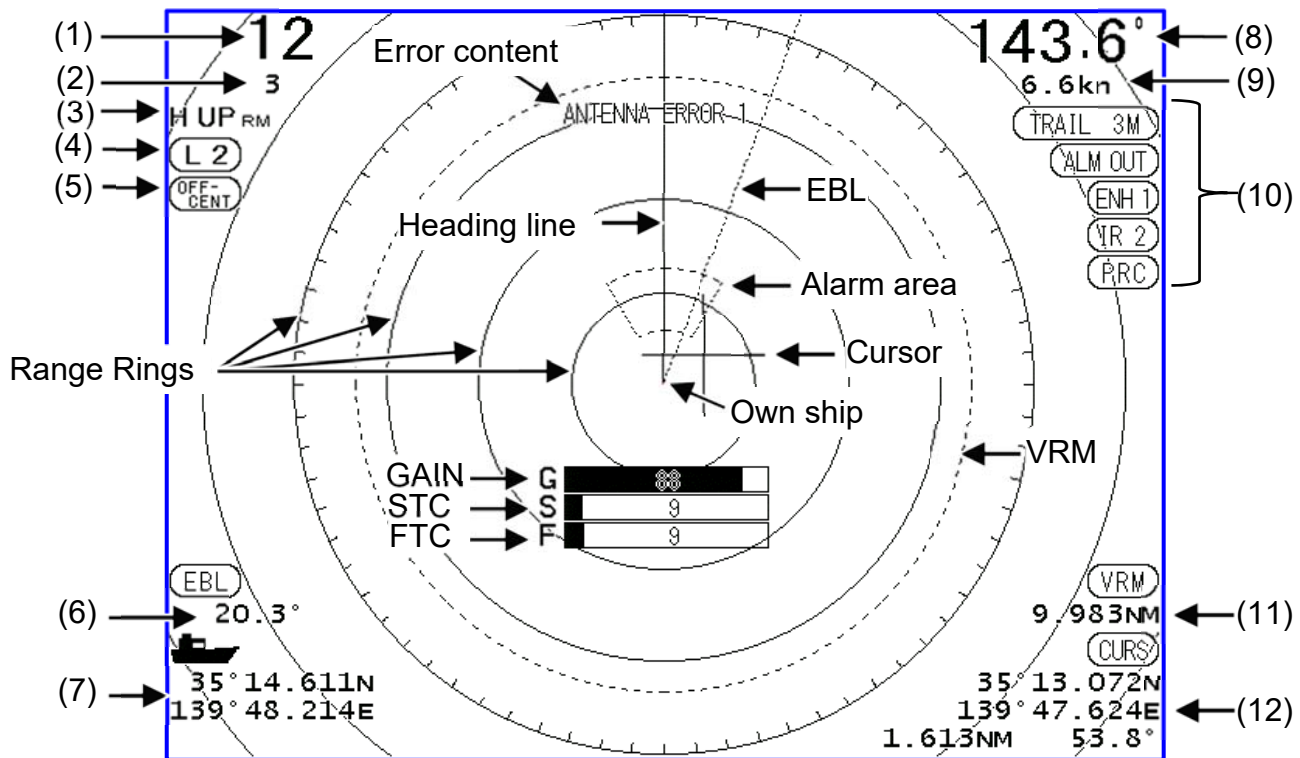
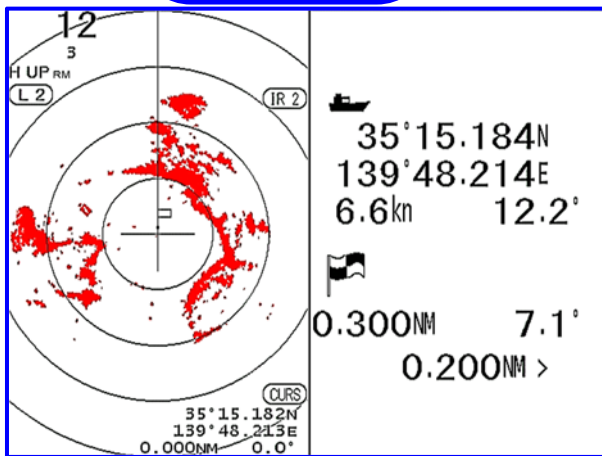


KODEN MDC-2000BB series Quick Reference

PPI Display



PPI/NAV Display

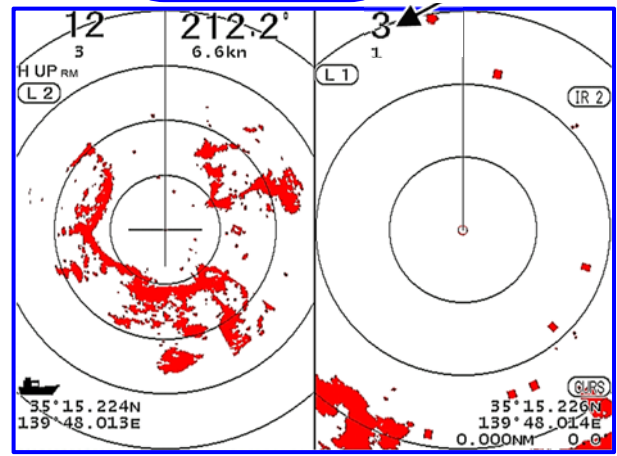


PPI display

NAV display

PPI/PPI Display

Sub screen range



Main screen

Sub screen

Explanation

- (1) Range
- (2) Range Rings interval
- (3) Mode
 - H UP: Head Up
 - N UP: North Up
 - C UP: Corse Up
 - WPT UP: Waypoint Up
 - RM: Relative Motion
 - TM: True Motion
- (4) Pulse
 - Short Long
 - SP < M1 < M2 < L1 < L2
- (5) Off Center state

- (6) EBL information
- (7) Own ship's information
- (8) Heading
- (9) Speed
- (10) Display setting information
- (11) VRM information
- (12) Cursor information

- TRAIL 3M Trail Time
- SLP 5M Sleep Setting
- ALM IN Alarm Mode
- ENH 1 Enhance Setting
- IR 2 Interference Rejection Setting
- PRC Process: OFF/ON

When set to OFF, the data is not displayed.

Adjust the STC / FTC. ([STC / FTC] knob)

Rotate or Press

Rotate

Disappear if you wait.

The [STC] and the [FTC] are toggled by pressing the [STC/FTC] knob.

Adjust the GAIN. ([GAIN / PPI] knob)

Rotate or Press

Rotate

Disappear if you wait.

The [GAIN] and the [GAIN of Sub screen] are toggled by pressing the [GAIN/PPI] knob. (PPI / PPI Display only.)

Adjust the brilliance. ([BRILL] key)

Press

Press

The [LCD BRILL] and the [PANEL BRILL] are toggled by pressing the [BRILL] key.

EBL. ([EBL] key) / VRM. ([VRM] key)

Press

Press

Press

Press

The On/Off display of EBL and VRM is toggled.

Start the transmission. ([STBY/TX] key)

Press

The transmission starts, and the picture is displayed.

To stop the transmission, press the [STBY/TX] key again.

Setting of Enhance. ([ENH] key)

Press

The Off, 1, 2 of Enhance is toggled.

Delete the heading line. ([HL OFF] key)

Keep Pressing

While pressing the [HL OFF] key, the heading line disappears.

Cursor returns. ([ENT] key)

Keep Pressing

The Cursor returns to the own ship position.

Turn on/ off the power.

Press

Turn on the power.

Keep pressing the key for 3 seconds.

Turn off the power.

Measure the distance / heading of 2-points. ([ENT] key)

Press The cursor moves.

Press The origin is set.

Press Press the [MENU] key to finish.

The distance / direction from the origin to the cursor is displayed.

Change the range / sub range. ([RANGE]/[SUB RANGE] key)

Press

The observation range is widened. (The image shrinks.)

The observation range is narrowed. (The image expands.)

Open the menu. ([MENU] key)

Press

The menu is displayed. Press the [MENU] key again to close the menu. (For the menu, see the back side.)

Setting of OFF CENTER. ([OFF CENT] key)

Press

The On / Off of OFF CENTER is toggled.

Execute the preset function. ([F1] / [F2] / [F3] / [F4] / [F5] / [F6] key)

Press

The operation differs depending on the preset function. By keep pressing the [F1]/[F2]/[F3]/[F4]/[F5]/[F6] key, a function assigned to each key can be selected.

Function which can be preset to [F1]/[F2]/[F3]/[F4]/[F5]/[F6] keys
 [MODE], [DISPLAY SELECT], [TRAIL TIME], [COLOR], [PI], [ALARM MODE], [ACQ], [DELETE], [POB], [TARGET], [OTHER SHIP], [PULSE], [PROCESS], [CAMERA DISPLAY], [OFF]