




CURSOR


When the Fish Finder is active, press  to display the VRM, press  again to close the VRM.

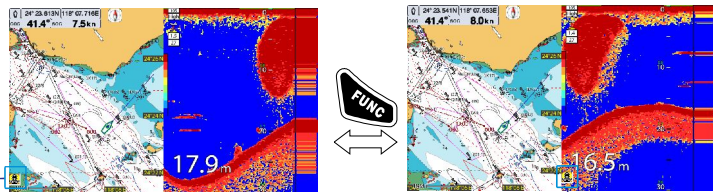
Shift ON/OFF


When the Fish Finder is active, press  to select the shift ON/OFF.


Notice: Shift function works only when the VRM is closed.

FUNC

Press  to switch between plotter and fish finder function.



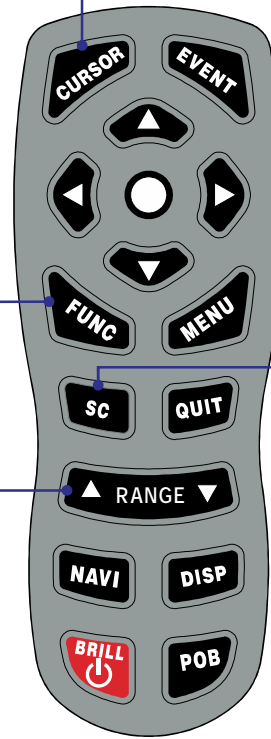
 When the plotter is active, all operations only work for plotter.

 When the Fish Finder is active, all operations only work for Fish Finder.

RANGE




- (1) When ▲ of the **【RANGE】** key is pushed, item in range menu will move up.
- (2) When ▼ of the **【RANGE】** key is pushed, item in range menu will move down.



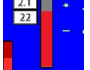

SC



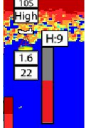

(1) Press  to show the Quick Menu.

(2) Use  to select operation.

Gain

Select "Gain", the  will display on the screen, use  to adjust the value.

STC

Select "STC", the  will display on the screen, use  to adjust the value.

Depth Graph[On]

Select "Depth Graph (On)" 

X-axis: time
Y-axis: depth

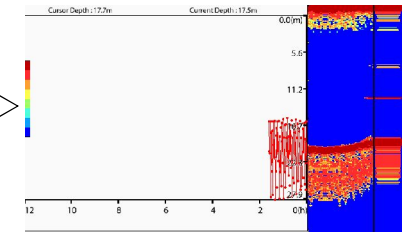
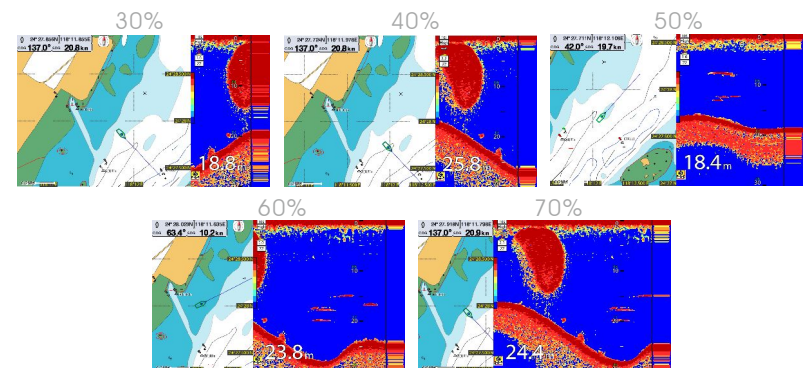


Image Partition Ration 30% ~ 70%



SC



- (1) Press **SC** to show the Quick Menu.
- (2) Use to select operation.

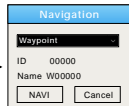
RANGE



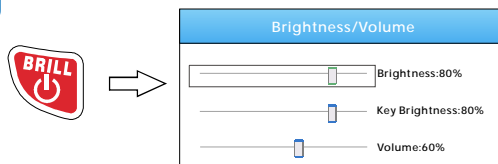
- (1) Press "RANGE Up" ▲ to zoom-in and show the detailed chart.
- (2) Press "RANGE Down" ▼ to zoom-out and show the general chart.

NAVI

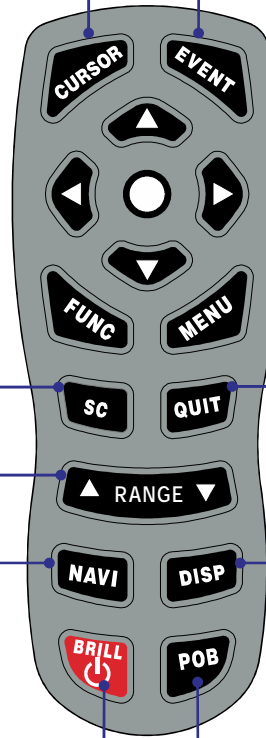
- (1) Press **NAVI** to call out navigation menu.
- (2) Can choose waypoint navigation or route forward/reverse navigation.
- (3) To cancel the current navigation, press **NAVI** again and select Cancel.



BRILL



- (1) Power on: Press **BRILL** until the Opening Display appears.
- (2) Power off: Press **BRILL** for 3 seconds.
- (3) Brightness / Volume: Press **BRILL** and adjust brightness and volume by .



CURSOR

Press **CURSOR** to show/hide the cursor.

EVENT

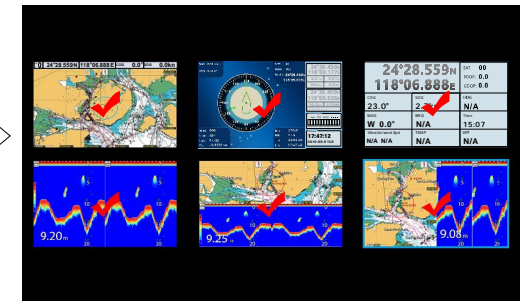
Press **EVENT** to add marker.

QUIT

Press **QUIT** to cancel current operation.

DISP

Long press **DISP**



- (1) Use to select the Display modes.
- (2) Press **QUIT**.
- (3) Press **DISP** to rotate between Display modes.

POB

Press **POB** to record the current position.