

- ① **Gain setting**  
H: High frequency  
L: Low frequency  
\*The number shows the present set value of gain.
- ② **Range mode**  
R:M: Manual  
R:A: Auto range  
R:AS: Auto shift
- ③ **Power Voltage**
- ④ **Alarm Set Status**  
← Arrival alarm  
← XTE alarm
- ⑤ **Status of [FUNC] key assignment**  
← Image speed  
← Interference rejection  
← Color rejection  
← Noise reduction  
← Shift
- ⑥ **Time mark**
- ⑦ **Rainbow pattern**

- ← Water temp alarm
- ← Speed alarm
- ← Zoom range
- ← Zoom start
- ← A scope
- ← White line
- ← Background color



### Select the display menu ([DISP] key)

Press [DISP] →

Disp
NAV 1
Normal (H)
Zoom (H)
Dual freq
Zoom (L)
Normal (L)
NAV 2

Press [MENU] →

\*Select by performing either operation.

### Select the setting of preset function ([FUNC] key)

The function differs depending on the [FUNC key setting].  
In case of [Image speed]:

Press [FUNC] →

Image Speed
Speed1
Speed2
Speed3
Speed4
Stop
Speed5 (1/1)
Speed6
Speed7
Speed8
Speed9

Press [MENU] →

\*Select by performing either operation.

\*By continuously pressing the [FUNC] key, a function

### Preset the destination / Preset the image ([EVENT] key)

Depending on the [EVENT key set], the function differs.  
In case of [Store pos]:

Press [EVENT] → Store the destination.

In case of [Store image]:

Press [EVENT] → Store the image of echo sounder.

Press

\*The navigation data such as GPS is necessary.

### Select the range ([▲RANGE▼] key)

Press [▲RANGE▼] →

Range
Auto range
5.0
1 0.0
2 0.0
5 0.0
1 0.0
1 6.0
3 0.0
5 0.0
Auto shift

Press [MENU] →

\*Select by performing either operation.

### Display the menu ([MENU] key)

Press [MENU] →

Adjust	Image speed	Speed5
D.range	IR	Strong
Display1	Color rejection	0%
Display1	Noise reduction	0
Alarm1	TVG	Medium
Alarm1	TX_power	Auto
NAV	Gain (TD)	
Image	Return	
System		
Next		

Press [MENU] →

\*The menu appears.

\*The menu closes.

### Power on/Power off ([BRILL] key)

Power on. Press [BRILL]

Power off. Keep pressing for more than 3 seconds. [BRILL]

### Gain adjust / Gain select ([Knob] key)

Press or Rotate [Knob] →

Auto adjust
0

Adjust → Press [MENU]

Rotate →

Gain
9.0

Select → Press [MENU]

Gain select
Manual
Cruising
Fishing

Press [MENU]

### Adjust the brilliance ([BRILL] key)

Press [BRILL] →

Panel brill
1 0

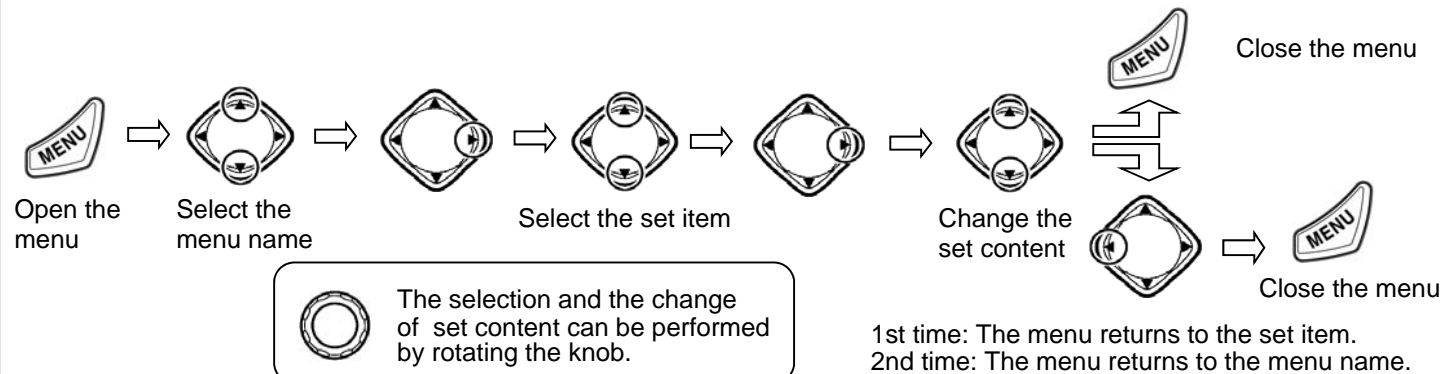
Rotate → Press [MENU]

Lcd brill
1 0

Rotate → Press [MENU]

\*Every time when pressing the [BRILL] key, the item is alternately displayed.

## ●How to operate the menu



## ●Function of Adjust Set Menu

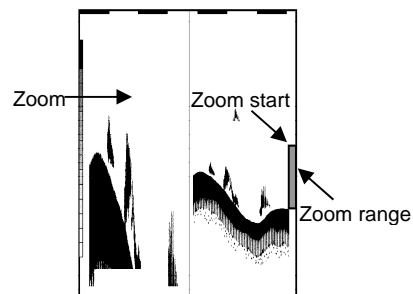
Adjust	Image speed	Speed5 ①
D.range	IR	Strong ②
Display1	Color rejection	0% ③
Display2	Noise reduction	0 ④
Alarm1	TVG	Medium ⑤
Alarm2	TX power	Auto ⑥
NAV	Gain(TD)	⑦
Image	Return	
System		
Next		

- Change the image speed.  
The image speed becomes slow in order of [Speed1]→[Speed2]→...→[Speed9].  
When [stop] is selected, the image stops.
- It rejects the interference with other echo sounder.  
When [Strong] is selected, the effect of rejection is strong.
- It rejects the weak noise appeared on the display.  
The greater the number is, the stronger the rejection becomes.
- It rejects the speck-like noise appeared on the entire image.  
The greater the number is, the stronger the rejection becomes.
- Set the TVG.  
The deep depth gain increase in order of [Weak]→[Medium]→[Strong].
- It sets the TX power.
- The reduction in sensitivity due to signal attenuation in Gain(TD) use and so on can be corrected.

## ●Function of display range set menu

Adjust	Shift step	1m ①
D.range	Zoom type	BTM. ②
Display1	Zoom range	10.0m ③
Display2	Zoom start	0m ④
Alarm1	Disp width	Center ⑤
Alarm2	Range preset	⑥
NAV	Return	
Image		
System		
Next		

- It sets the quantity of movement of shift.
- It selects the kind of the zoom type.
- It sets the range of image selected in ②.
- It sets the zoom starting position of image set in ②.
- It selects the disp width.
- It presets the range.



## ●Preset of Range

Registration of the range can be easily changed with following operation. Preset the set value suitable for you purpose.

