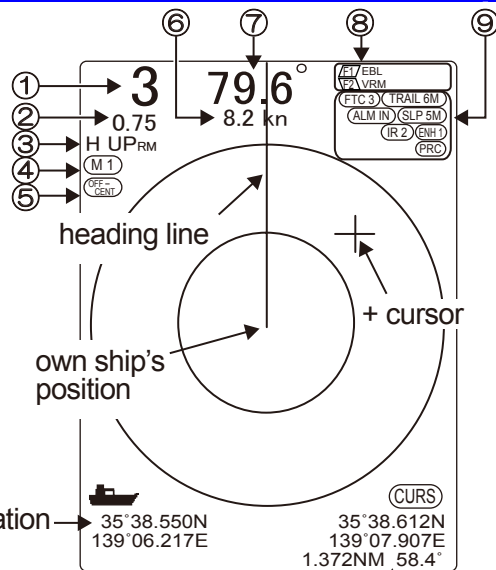


KODEN MDC-2000 series Quick Reference

- ① Range
- ② Range Rings Interval
- ③ Mode
 - H UP: Head Up
 - N UP: North Up
 - C UP: Course Up
 - WPT UP: Waypoint Up
 - RM: Relative Motion
 - TM: True Motion
- ④ Pulse
 - Short Long
 - SP < M1 < M2 < L1 < L2
- ⑤ Off Center State
- ⑥ Speed
- ⑦ Heading
- ⑧ State of [F1]/[F2] key assignment
 - (FTC 3) FTC set value
 - (TRAIL 6M) Trail Time
 - (ALM IN) Alarm Mode
 - (SLP 5M) Sleep Setting
 - (IR 2) Interference Rejection Setting
 - (ENH 1) Enhance Setting
 - (PRC) Process: OFF/ON
- ⑨ Display Setting Information
 - When set to OFF, the data is not displayed.



Execute the preset function. ([F1] / [F2] keys)



The operation differs depending on the preset function.



Operate while referring to the operation guide on the display.

Press

Functions which can be preset to [F1] / [F2] keys

[FTC], [Mode], [Display Select], [Off Center], [Enhance], [Trail Time], [EBL], [VRM], [Color], [PI (Parallel Cursor)], [Alarm Mode], [ACQ], [Delete], [POB], [Target], [Other Ship], [Pulse], [Process]

By keep pressing the [F1] / [F2] key, a function assigned to each key can be selected.

Change the range. ([- RANGE +] key)

Press [+]
→ The observation range is widened. (The image shrinks.)

Press [-]
→ The observation range is narrowed. (The image expands.)

Adjust the STC. ([STC] knob)



Rotate

When rotating clockwise the [STC] knob, the effect of suppressing the reflection from sea surface becomes stronger. When rotating counterclockwise the [STC] knob, suppressing the reflection from sea surface becomes weaker.

※ In PPI/PPI, the upper and lower screens change simultaneously.

Display the video of CCD camera. ([STC] knob)



Press

The video of the CCD camera is displayed. ※ The full screen and the half screen are toggled by pressing the [STC] knob.

To clear the CCD camera video, press any other key.

Start the transmission. ([STBY/TX] key)



Press

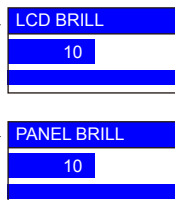
The transmission starts, and the picture is displayed.

To stop the transmission, press the [STBY/TX] key again.

Adjust the brilliance. ([BRILL] key)



Press



Press

Press

※ The [LCD BRILL] and the [PANEL BRILL] are toggled by pressing the [BRILL] key.

Delete the heading line. ([ENT] key)

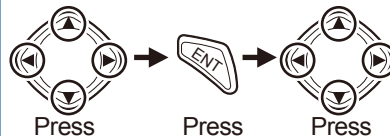


Keep pressing

While pressing the [ENT] key, the heading line disappears.

When releasing the [ENT] key, the heading line appears again, and the + cursor returns to the own ship position.

Measure the distance/heading of 2-points. ([ENT] key)



Press

The cursor moves.

Press

The origin is set.

Press

The distance/direction from the origin to the + cursor is displayed.

Press the [MENU] key to finish.

Open the menu. ([MENU] key)



Press

The menu is displayed. Press the [MENU] key again to close the menu. (For the menu, see the back side.)

Adjust the gain. ([GAIN] knob)



Rotate

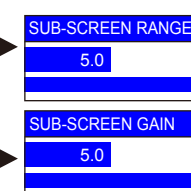
When rotating clockwise the [GAIN] knob, the gain increases.

When rotating counterclockwise the [GAIN] knob, the gain decreases.

Change the range/gain of the lower screen in the PPI/PPI. ([GAIN] knob)



Press



Press

Press

※ The [SUB-SCREEN RANGE] and the [SUB-SCREEN GAIN] are toggled by pressing the [GAIN] knob.

Turn on/off the power. ([BRILL] key)

Turn on the power.

Turn off the power.

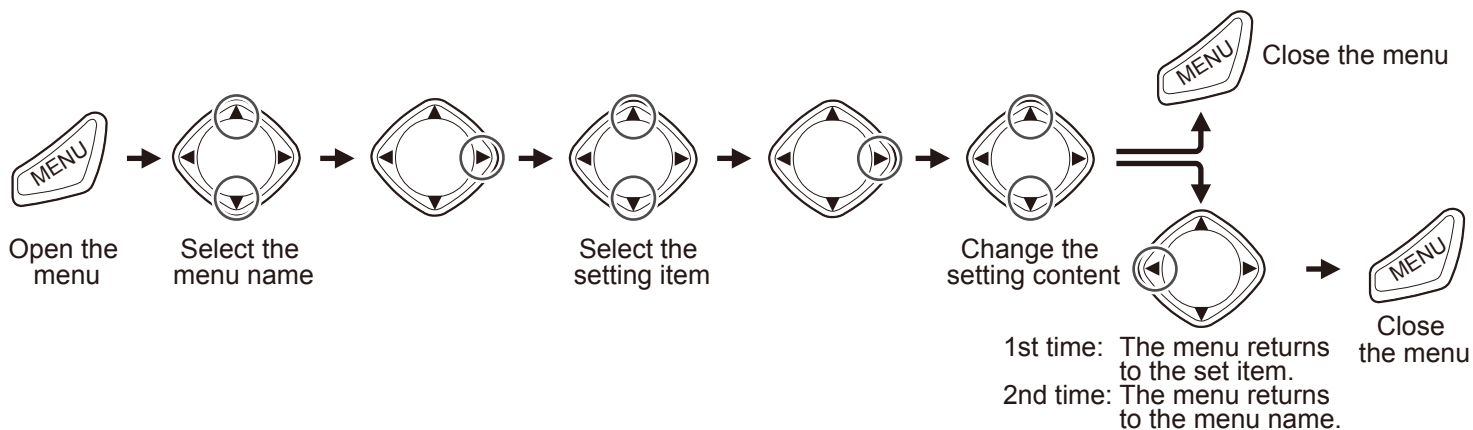


Press



Turn off the power. Keep pressing the key for 3 seconds.

● How to operate the Menu



● Functions of Echo Setting Menu

| | | | |
|---------|----------------|------------|---|
| ECHO | FTC | 3 | ① |
| TRAILS | MODE | H UP RM | ② |
| DISPLAY | DISPLAY SELECT | PPI | ③ |
| ALARM | OFF CENTER | OFF | ④ |
| AIS | ENHANCE | 1 | ⑤ |
| ATA | PROCESS | OFF | ⑥ |
| NEXT | PULSE | RESO-P PRI | ⑦ |

- ① Change the setting of FTC.
The bigger numerical value brings bigger effect.
- ② Change the display mode.
Select from [H UP RM], [N UP RM], [N UP TM], [C UP RM], [C UP TM], and [WPT UP RM].
- ③ Set the display configuration.
- ④ Set the center position of the display.
The set position becomes the center of the display (own ship's position).
- ⑤ The enlarged image is displayed.
The bigger numerical value expands target more greatly.
- ⑥ Stabilize the unstable targets by signal-processing the picture.
- ⑦ Change the pulse width.
[RESO-P PRI] : Suitable for searching in the place where targets are crowded.
[GAIN PRI] : Suitable for searching small targets.

● Functions of Trail Setting Menu

| | | | |
|---------|-------------------|----------|---|
| ECHO | TRAIL MODE | TRUE | ① |
| TRAILS | TRAIL TIME | 3MIN | ② |
| DISPLAY | TRAILSHAPE | STANDARD | ③ |
| ALARM | TRAIL LEVEL | 7 | ④ |
| AIS | | | |
| ATA | | | |
| NEXT | | | |

- ① Set the display method of the trail.
[REL] : Display the difference of the relative target position as a trail.
[TRUE] : Display the trail of the course and speed of a moving target irrespective of own ship's motion.
※To display the true trail, entering the data of heading, ship speed and latitude/longitude is required.
- ② Set a time to display the trail.
- ③ Set the shape of the trail.
[STANDARD] : Even if time goes, the shape of the trail remains unchanged.
[DECREASE] : As time goes, the trail becomes narrower.
- ④ Set the signal level of the trail.
When increasing the numerical value, only targets that return strong reflections are displayed.

● Functions of Display Setting Menu

| | | | |
|---------|-----------------|----------|---|
| ECHO | EBL | ON | ① |
| TRAILS | VRM | ON | ② |
| DISPLAY | COLOR | STANDARD | ③ |
| ALARM | CURSOR SHAPE | STANDARD | ④ |
| AIS | PI | OFF | ⑤ |
| ATA | PI NUMBER | 7 | ⑥ |
| NEXT | BRG TRUE/REL | REL | ⑦ |
| | VECTOR | 6MIN | ⑧ |
| | VECTOR TRUE/REL | TRUE | ⑨ |

- ① Measure the bearing from own ship to a target.
After selecting [ON] and pressing the [▶] key, change the bearing with the [◀] and [▶] keys.
- ② Measure the distance from own ship to a target.
After selecting [ON] and pressing the [▶] key, change the distance with the [▲] and [▼] keys.
- ③ Change the color of entire display.
- ④ Set the shape of the + cursor.
- ⑤ Display straight lines which are parallel with own ship set as a standard.
- ⑥ Set a number of parallel lines.
- ⑦ Change the + cursor and the bearing display mode of the EBL.
[TRUE] : The true north points 0°.
[REL] : The heading points 0°.
- ⑧ Display the bearings and speeds of own ship and other ships as vector lines.
- ⑨ Set the mode (TRUE/RELATIVE) of the vector line.