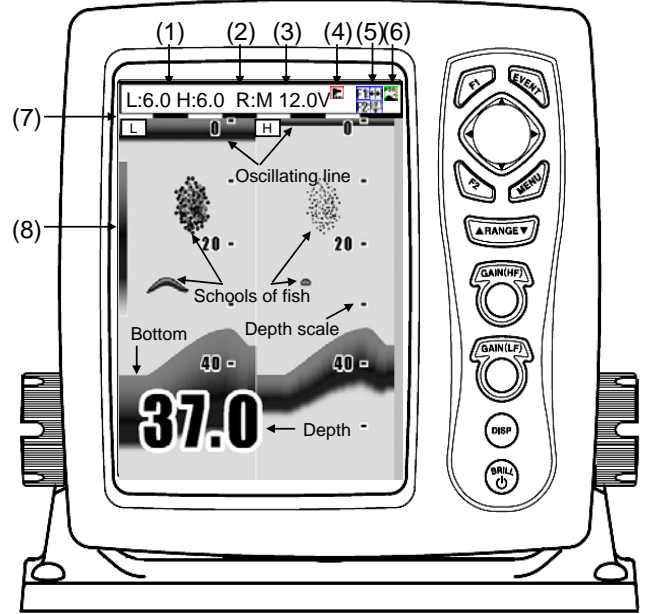


- (1) Gain setting**
H : High frequency
L : Low frequency
*The number shows the present set value of gain.
- (2) Range mode**
R:M : Manual
R:A : Auto range
R:AS : Auto shift
- (3) Power Voltage**
- (4) Alarm Set Status**
 - ← Arrival alarm
 - ← XTE alarm
 - ← Water temp alarm
 - ← Speed alarm
- (5) Status of [F1]/[F2] key assignment**
 - ← Image speed
 - ← Interference rejection
 - ← Color rejection
 - ← Noise rejection
 - ← Shift
 - ← Zoom range
 - ← Zoom start
 - ← A scope
 - ← White line
 - ← Background color
- (6) Status of [EVENT] key assignment**
 - ← Store position
 - ← Store image
 - ← Fishing hot spot
- (7) Time mark**
- (8) Rainbow pattern**



Select the setting of preset function ([F1] key / [F2] key)
The function differs depending on the [F1/F2 key setting].
In case of [Image speed]:

Press **[F1]** →

Image Speed
Speed1
Speed2
Speed3
Speed4
Stop
Speed5 (1/1)
Speed6
Speed7
Speed8
Speed9

Press **[MENU]** →

Speed1
Speed2
Speed3
Speed4
Stop
Speed5 (1/1)
Speed6
Speed7
Speed8
Speed9

Press **[Rotary]** →

Speed1
Speed2
Speed3
Speed4
Stop
Speed5 (1/1)
Speed6
Speed7
Speed8
Speed9

Rotate **[Rotary]** →

Speed1
Speed2
Speed3
Speed4
Stop
Speed5 (1/1)
Speed6
Speed7
Speed8
Speed9

*Select by performing either operation.

*By continuously pressing the [F1]/[F2] key, a function assigned to each key can be selected.

Select the range ([▲ RANGE▼] key)

Press **[▲ RANGE▼]** →

Range
Auto range
5.0
10.0
20.0
50.0
100
160
300
500
Auto shift

Press **[MENU]** →

Auto range
5.0
10.0
20.0
50.0
100
160
300
500
Auto shift

Press **[Rotary]** →

Auto range
5.0
10.0
20.0
50.0
100
160
300
500
Auto shift

Rotate **[Rotary]** →

Auto range
5.0
10.0
20.0
50.0
100
160
300
500
Auto shift

*Select by performing either operation.

Select the display menu ([DISP] key)

Press **[DISP]** →

Disp
NAV 1
Normal (H)
Zoom (H)
Dual freq
Zoom (L)
Normal (L)
NAV 2

Press **[MENU]** →

NAV 1
Normal (H)
Zoom (H)
Dual freq
Zoom (L)
Normal (L)
NAV 2

Press **[Rotary]** →

NAV 1
Normal (H)
Zoom (H)
Dual freq
Zoom (L)
Normal (L)
NAV 2

Rotate **[Rotary]** →

NAV 1
Normal (H)
Zoom (H)
Dual freq
Zoom (L)
Normal (L)
NAV 2

*Select by performing either operation.

Power on/Power off ([BRILL] key)

Power on.
Press **[BRILL]**

Power off.
Keep pressing for more than 3 seconds.

Adjust the brilliance ([BRILL] key)

Press **[BRILL]** →

Panel brill
10

 → Rotate → Press **[MENU]**

Press **[BRILL]** →

Lcd brill
10

 → Rotate → Press **[MENU]**

*Every time when pressing the [Brill] key, the item is alternately displayed.

Preset the destination / Preset the image ([EVENT] key)
Depending on the [EVENT key set], the function differs.

In case of [Store pos]:
Press **[EVENT]** → Store the destination.

In case of [Store image]:
Press **[EVENT]** → Store the image of echo sounder.

*The navigation data such as GPS is necessary.

Display the menu ([MENU] key)

Press **[MENU]** →

Adjust	Image speed	Speed5
D.range	IR	Strong
Display1	Color rejection	0 %
Display1	Noise rejection	0
Alarm1	TVG	Medium
NAV	TX power	Auto
Image	Gain (TD)	
System	Pulse width**	Middle
Freq**	Band width**	Middle
Next	D.Range**	24dB
Return		

 → Press **[MENU]**

*The menu closes.

**Only for CVS-128B
*The menu appears.

Gain adjust / Gain select ([Knob] key)

Press or Rotate **[Knob]** →

Auto adjust
0

 → Rotate → Adjust → Press **[MENU]**

Press or Rotate **[Knob]** →

Gain
9.0

 → Press →

Gain select
Manual
Cruising
Fishing

 → Press **[MENU]**

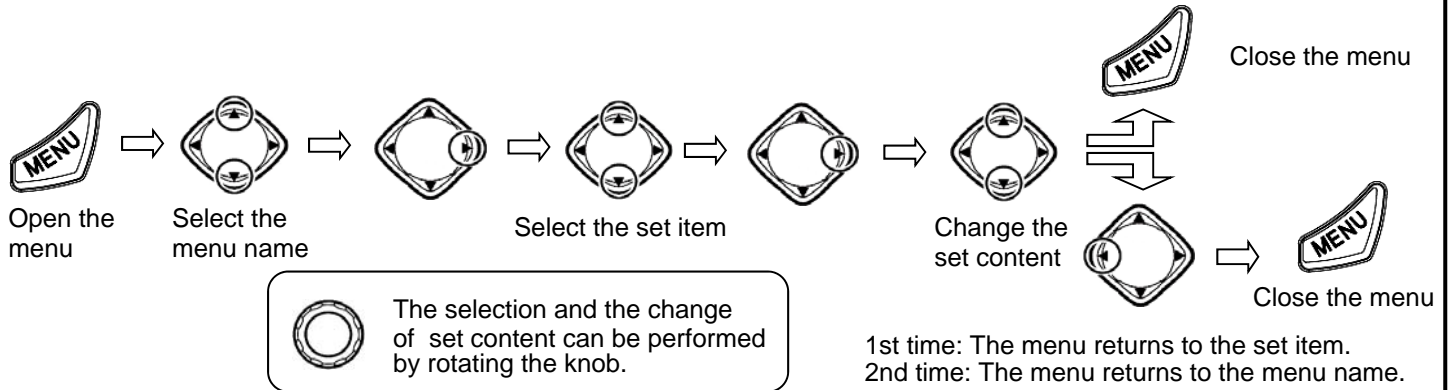
Press **[Rotary]** →

Gain select
Manual
Cruising
Fishing

 → Press **[MENU]**

*[GAIN (HF) Knob] key can adjust high frequency.
*[GAIN (LF) Knob] key can adjust low frequency.

●How to operate the menu



●Function of Adjust Set Menu

Adjust	Image speed	Speed5 (1)
D.range	IR	Strong (2)
Display1	Color rejection	0% (3)
Display2	Noise rejection	0 (4)
Alarm1	TVG	Medium (5)
Alarm2	TX power	Auto (6)
NAV	Gain(TD)	(7)
Image	Pulse width*	Middle
System	Band width*	Middle
Freq*	D.Range*	24dB
Next	Return	

*Only for CVS-128B

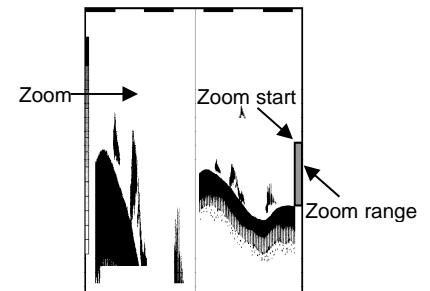
- Change the image speed.
The image speed becomes slow in order of [Speed1]→[Speed2]→...→[Speed9].
When [stop] is selected, the image stops.
- It rejects the interference with other echo sounder.
When [Strong] is selected, the effect of rejection is strong.
- It rejects the weak noise appeared on the display.
The greater the number is, the stronger the rejection becomes.
- It rejects the speck-like noise appeared on the entire image.
The greater the number is, the stronger the rejection becomes.
- Set the TVG.
The deep depth gain increase in order of [Weak]→[Medium]→[Strong].
- It sets the TX power.
- The reduction in sensitivity due to signal attenuation in Gain(TD) use and so on can be corrected.
You can make numerical value bigger at the time of lack of sensitivity.

●Function of display range set menu

Adjust	Shift step	1m (1)
D.range	Zoom type	BTM. (2)
Display1	Zoom range	10.0m (3)
Display2	Zoom start	0m (4)
Alarm1	Disp width	Center (5)
Alarm2	Range preset	(6)
NAV	Return	
Image		
System		
Freq*		
Next		

*Only for CVS-128B

- It sets the quantity of movement of shift.
- It selects the kind of the zoom type.
- It sets the range of image selected in (2).
- It sets the zoom starting position of image set in (2).
- It selects the disp width.
- It presets the range.



●Preset of Range

Registration of the range can be easily changed with following operation. Preset the set value suitable for you purpose.

